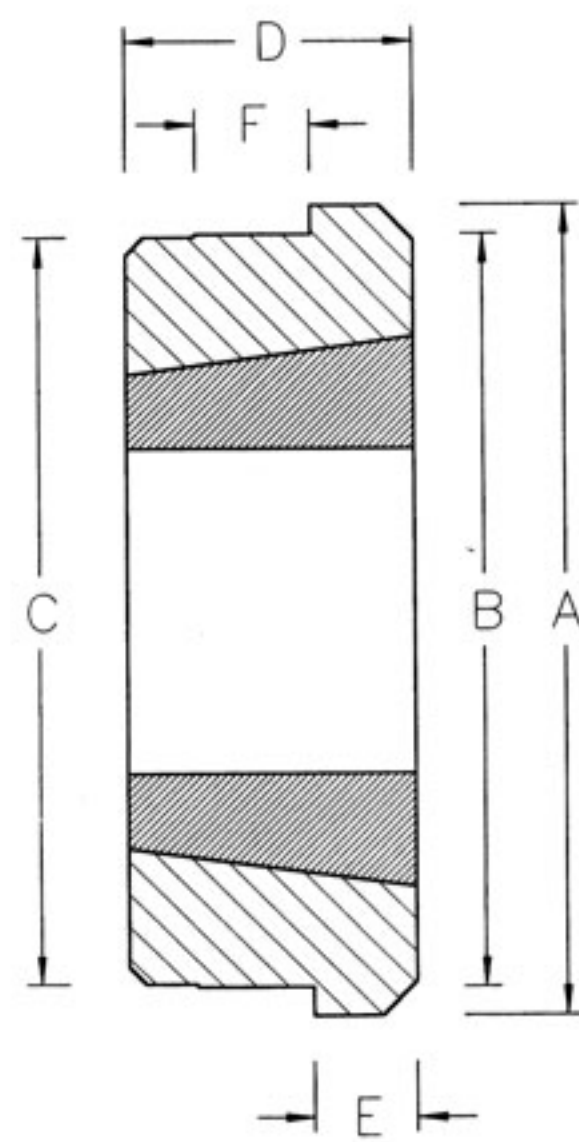


TB WELD / BOLT - ON HUB

TB WELD-ON-HUB are made of S45C carbon steel. The flanges provide convenient means of welding hubs into Plate Sprockets, Conveyor Pulleys and many others devices which must be firmly fastened to shafts. Weld-On Hubs are easy to install and entirely suitable for use where severe operating conditions are met. It is available in 2 series WM & WH types.

Model Number	Bush Size	A	B	C	D	E	F
WM 12	1210	70	60	58.0	25	9	10
WM16-1	1610	83	70	68.0	25	9	10
WM16-2	1615	83	70	68.0	38	16	10
WM20	2012	95	90	88.0	32	12	12
WM25	2517	127	110	108.0	44	19	13
WM 30-2	3020	152	130	125.0	50	25	15
WM 30	3030	152	130	125.0	76	25	19
WM35	3535	184	155	151.0	89	32	25
WH 12	1210	70	65	64.5	25	9	10
WH 16	1610	80	75	74.5	25	9	10
WH 20	2012	95	90	89.5	32	12	12
WH 25	2517	115	110	109.5	44	19	15
WH 30	3020	145	140	139.5	50	19	15
WH 35-2	3525	190	180	179.5	65	25	25
WH 35	3535	190	180	179.5	89	32	25



TB BOLT-ON-HUB are designed for use with Taper Bushes and are made of high grade cast iron. The design allows the same hub to be used from both sides thus reducing the cost. It provides convenient means of securing Impellers, Fan Rotors and other components which must be firmly fastened to shaft.

Model Number	Bush Size	A	B	C	D	E	F	G	H	J
Sm 12	1210	180	135	90	75	25	6.5	2.50	11.50	6 x dia.7.5 holes
Sm 16	1615	200	150	110	85	38	7.5	2.50	12.50	6 x dia.7.5 holes
SM 20	2012	270	190	140	110	32	8.5	2.50	13.50	6 x dia.9.5 holes
SM 25	2517	340	240	170	125	45	9.5	2.50	14.50	8 x dia.11.5 holes
SM 30-1	3020	430	300	220	160	51	13.5	2.50	18.50	8 x dia.13.5 holes
SM 30-2	3020	485	340	250	160	51	13.5	2.50	18.50	8 x dia.13.5 holes

All dimensions in mm unless specified.

