

TB TAPER BUSHES

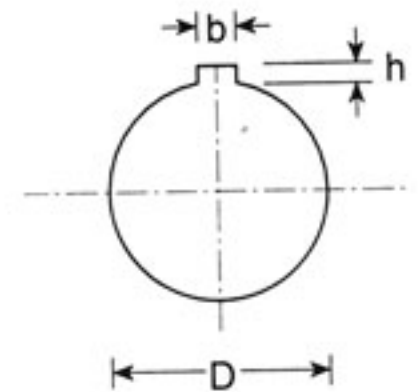
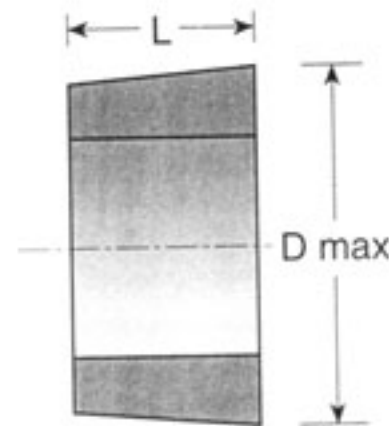
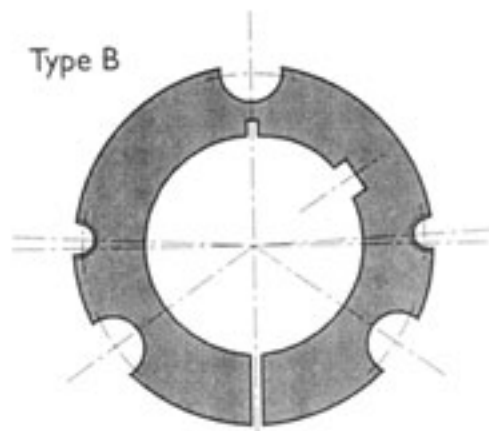
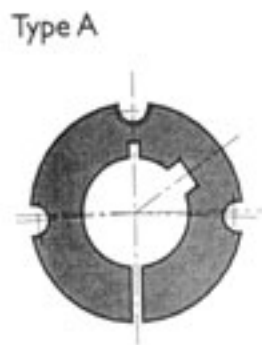
In the past, it had been necessary to employ skilled labour for fitting components to shafts. Using TB Taper Bushes is possible now for unskilled labour to achieve 'shrink fit' of pulleys, coupling, etc, onto shafts using only a hexagon wrench.

The arrangement of threaded half holes and longitudinal split in the tapered bush is designed to ensure maximum grip and fast, easy fixing. Tightening of the screws into the threaded holes in the hub forces the bush into the taper bored component, thereby effectively contracting the bore of the Taper Bush until the equivalent of the shrink fit is obtained.

Taper Bushes are equally suitable for metric and imperial shafts.

ADVANTAGES

- No re boring and keywaying cost
- Save time and cost in fitting keys
- Eliminates precision taper fitting keys
- Over 500 bush size/bore combinations are available with both metric and imperial bores
- Interchangeable between many products
- Taper bored components can be transferred to other diameter shafts fitting alternative bore bushes
- Conveniences in dismantling for maintenance and component replacement
- Accommodates shaft limits of +0.050mm, -0.1 25mm



TB NO.	1008	1108	1210	1215	1310	1610	1615	2012	2517	2525	3020	3030	3525	3535	4040	4545	5050
TYPE	A	A	A	A	A	A	A	A	A	A	A	A	B	B	B	B	B
D	35.0	38.0	47.5	47.5	50.5	57.0	57.0	70.0	85.5	85.5	108.0	108.0	127.0	127.0	146.0	162.0	177.5
L	22.3	22.3	25.4	38.1	25.4	25.4	38.1	31.8	44.5	63.5	50.8	76.2	63.5	88.9	101.6	114.3	127.0
Wt. (kgs)	0.12	0.16	0.28	0.39	0.32	0.42	0.61	0.75	1.1	2.25	2.61	3.8	3.9	5.25	7.8	12.8	15.3
Screw Size	3	3	5	5	5	5	5	5	6	6	6	6	10	10	12	14	14
Screw Qty	2	2	2	2	2	2	2	2	2	2	2	2	3	3	3	3	3
Tightening Torque (Nm)	5.5	5.6	20	20	20	20	20	30	50	50	90	90	115	115	170	190	270

All Dimensions in mm unless specified.

TB TAPER BUSHES

METRIC BORES AND KEYWAYS

- B.S 4235 Part 1:1972 with exception of those marked •

Bore Dia.	Keyway		1008	1108	1210	1215	1310	1610	1615	2012	2517	2525	3020	3030	3525	4030	4535	4545	5050
	Width	Depth																	
9	3	1.4	*	*															
10	3	1.4	*	*															
11	4	1.8	*	*	*	*	*												
12	4	1.8	*	*	*	*	*	*	*										
14	5	2.3	*	*	*	*	*	*	*	*									
15	5	2.3	*	*	*	*	*	*	*	*									
16	5	2.3	*	*	*	*	*	*	*	*									
18	6	2.8	*	*	*	*	*	*	*	*									
19	6	2.8	*	*	*	*	*	*	*	*	*	*							
20	6	2.8	*	*	*	*	*	*	*	*	*	*							
22	6	2.8	*	*	*	*	*	*	*	*	*	*							
24	8	3.3(1,3)	•	*	*	*	*	*	*	*	*	*							
25	8	3.3(1,3)	•	*	*	*	*	*	*	*	*	*	*	*					
28	8	3.3(1,3)		•	*	*	*	*	*	*	*	*	*	*	*	*			
30	8	3.3			*	*	*	*	*	*	*	*	*	*	*	*	*		
32	10	3.3			*	*	*	*	*	*	*	*	*	*	*	*	*	*	
35	10	3.3(1,3)					•	*	*	*	*	*	*	*	*	*	*	*	
38	10	3.3						*	*	*	*	*	*	*	*	*	*	*	
40	12	3.3						*	*	*	*	*	*	*	*	*	*	*	*
42	12	3.3(1,3)						•	•	*	*	*	*	*	*	*	*	*	*
45	14	3.8								*	*	*	*	*	*	*	*	*	*
48	14	3.8								*	*	*	*	*	*	*	*	*	*
50	14	3.8								*	*	*	*	*	*	*	*	*	*
55	16	4.3									*	*	*	*	*	*	*	*	*
60	18	4.4									*	*	*	*	*	*	*	*	*
65	18	4.4(2,3)									•	*	*	*	*	*	*	*	*
70	20	4.9											*	*	*	*	*	*	*
75	20	4.9											*	*	*	*	*	*	*
80	22	5.4												*	*	*	*	*	*
85	22	5.4												*	*	*	*	*	*
90	25	5.4												*	*	*	*	*	*
95	25	5.4													*	*	*	*	*
100	28	6.4														*	*	*	*
105	28	6.4															*	*	*
110	28	6.4															*	*	*
115	32	7.4																*	*
120	32	7.4																*	*
125	32	7.4																*	*

• Bore with shallow keyway depth indicated in ()

All Dimensions in mm unless specified.

TB TAPER BUSHES

IMPERIAL BORES AND KEYWAYS - BS 46 part: 1:1958 with exception or those marked •

Bore Dia.	Keyway		1008	1108	1210	1215	1310	1610	1615	2012	2517	2525	3020	3030	3525	3535	4040	4545	5050
	Width	Depth																	
3/8	1/8	1/16	*	*															
7/16	1/8	1/16	*	*															
1/2	1/8	1/16	*	*	*	*	*	*	*										
9/16	3/16	3/32	*	*	*	*	*	*	*										
5/8	3/16	3/32	*	*	*	*	*	*	*										
11/16	3/16	3/32	*	*	*	*	*	*	*										
3/4	3/16	3/32	*	*	*	*	*	*	*	*	*								
13/16	1/4	1/8	*	*	*	*	*	*	*	*	*								
7/8	1/4	1/8	*	*	*	*	*	*	*	*	*	*							
15/16	1/4	1/8(1/16)	•	*	*	*	*	*	*	*	*	*							
1	1/4	1/8(1/16)	•	*	*	*	*	*	*	*	*	*							
1.1/16	5/16	1/8(5/64)		•	*	*	*	*	*	*	*	*							
1.1/8	5/16	1/8(5/64)		•	*	*	*	*	*	*	*	*							
1.3/16	5/16	1/8			*	*	*	*	*	*	*	*	*	*					
1.1/4	5/16	1/8			*	*	*	*	*	*	*	*	*	*	*				
1.5/16	3/8	1/8				*	*	*	*	*	*	*	*	*	*				
1.3/8	3/8	1/8					*	*	*	*	*	*	*	*	*				
1.7/16	3/8	1/8						*	*	*	*	*	*	*	*				
1.1/2	3/8	1/8						*	*	*	*	*	*	*	*	*			
1.5/8	7/16	5/32(1/8)						•	•	*	*	*	*	*	*	*	*		
1.3/4	7/16	5/32								*	*	*	*	*	*	*	*	*	
1.7/8	1/2	5/32								*	*	*	*	*	*	*	*	*	
2	1/2	5/32								*	*	*	*	*	*	*	*	*	
2.1/8	5/8	7/32									*	*	*	*	*	*	*	*	
2.1/4	5/8	7/32										*	*	*	*	*	*	*	*
2.3/8	5/8	7/32										*	*	*	*	*	*	*	*
2.1/2	5/8	7/32										*	*	*	*	*	*	*	*
2.5/8	3/4	1/4											*	*	*	*	*	*	*
2.3/4	3/4	1/4											*	*	*	*	*	*	*
2.7/8	3/4	1/4											*	*	*	*	*	*	*
3	3/4	1/4											*	*	*	*	*	*	*
3.1/8	7/8	5/16												*	*	*	*	*	*
3.1/4	7/8	5/16												*	*	*	*	*	*
3.3/8	7/8	5/16												*	*	*	*	*	*
3.1/2	7/8	5/16(1/4)												•	•	*	*	*	*
3.3/4	1	3/8(1/4)														•	*	*	*
4	1	3/8(1/4)														•	*	*	*
4.1/4	1.1/4	3/8(1/4)															•	*	*
4.1/2	1.1/4	7/16(1/4)															•	*	*
4.3/4	1.1/4	7/16																•	*
5	1.1/4	7/16(5/16)																	•

• Bore with shallow keyway depth indicated in ()

All Dimensions in inches unless specified.

TAPER BUSHES

METRIC BORES AND KEYWAYS - OLD JIS STANDARD (JIS B 1301-1959)

Bore Dia.	Keyway		1008	1108	1210	1610	1615	2517	3020	3030	3525	3535	4040	4545	5050
	Width	Depth													
10	4	1.5	*	*											
11	4	1.5	*	*	*										
12	4	1.5	*	*	*	*	*								
14	5	2.0	*	*	*	*	*								
15	5	2.0	*	*	*	*	*								
16	5	2.0	*	*	*	*	*	*							
18	5	2.0	*	*	*	*	*	*							
19	5	2.0	*	*	*	*	*	*							
20	5	2.0	*	*	*	*	*	*							
22	7	3.0	*	*	*	*	*	*							
24	7	3.0	*	*	*	*	*	*							
25	7	3.0	*	*	*	*	*	*							
28	7	3.0			*	*	*	*	*	*					
30	7	3.0			*	*	*	*							
32	10	3.5			*	*	*	*							
35	10	3.5				*	*	*	*	*	*	*			
38	10	3.5				*	*	*	*	*	*	*			
40	10	3.5				*	*	*	*	*	*	*	*		
42	12	3.5						*	*	*	*	*	*	*	
45	12	3.5						*	*	*	*	*	*	*	
48	12	3.5						*	*	*	*	*	*	*	
50	12	3.5						*	*	*	*	*	*	*	
55	15	5.5						*	*	*	*	*	*	*	*
60	15	5.0							*	*	*	*	*	*	*
65	18	6.0							*	*	*	*	*	*	*
70	18	6.0							*	*	*	*	*	*	*
75	20	6.0							*	*	*	*	*	*	*
80	20	6.0								*	*	*	*	*	*
85	24	6.0								*	*	*	*	*	*
90	24	8.0								*	*	*	*	*	*
95	24	8.0									*	*	*	*	*
100	28	9.0										*	*	*	*
105	28	9.0											*	*	*
110	28	9.0											*	*	*
115	32	10.0												*	*
120	32	10.0												*	*
125	32	10.0												*	*

All Dimensions in mm unless specified.