

STOCK GEARS

More than half a century of gear manufacturing... It is our belief that the products are one of the leading names in gear manufacturing in Japan, and that they will meet the exacting requirements of our overseas users.

Needless to say, gears play an important part in power transmission mechanisms, and it is essential that they are of high quality and accuracy. We are ready to respond to any and all inquiries.

- 1) 36 types (approx. 3,500 in all) are available according to applications.
- 2) quality guaranteed
- 3) Low cost through mass production
- 4) Off-the-shelf stock gears eliminate the need for the time consuming design.

Abundant Variety and Gear Ratios

Our wide variety of gears, from precision types of the JIS 1 grade to economical types of the JIS 4 and 5 grades, provide an excellent selection to suit many applications. Furthermore, the number of teeth for spur gears to give one example is standardized between 12 and 120, so that velocity ratio can be selected freely.

Selection of Materials According to Application

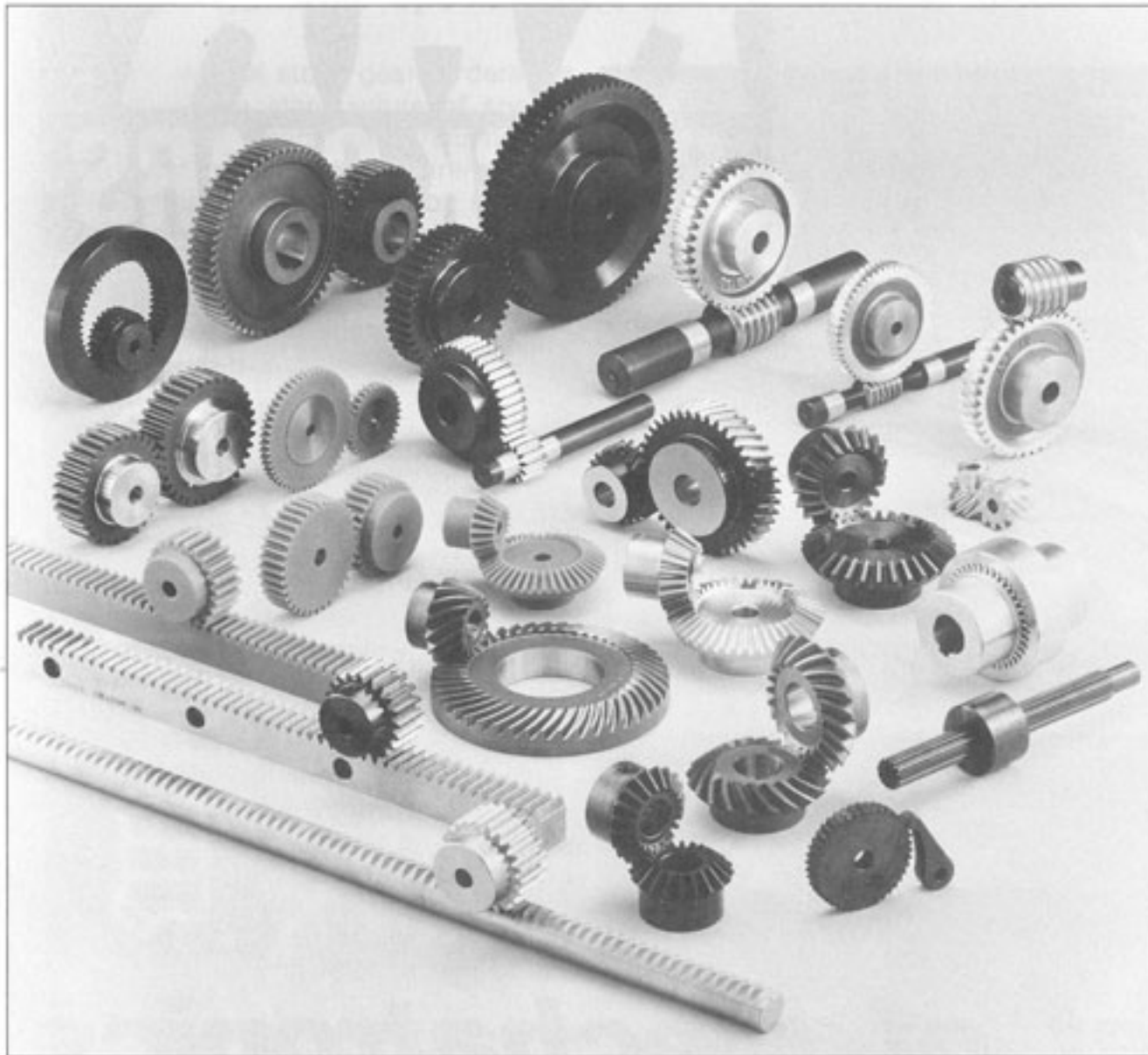
Ten different materials are used, from the highly strong and wear resistant SCM415 and light, rustless nylon and stainless material, to SCM435, S45C, FC20, ALBC, BC, C3604BD-F, and Duracon for molded gears.

High Precision

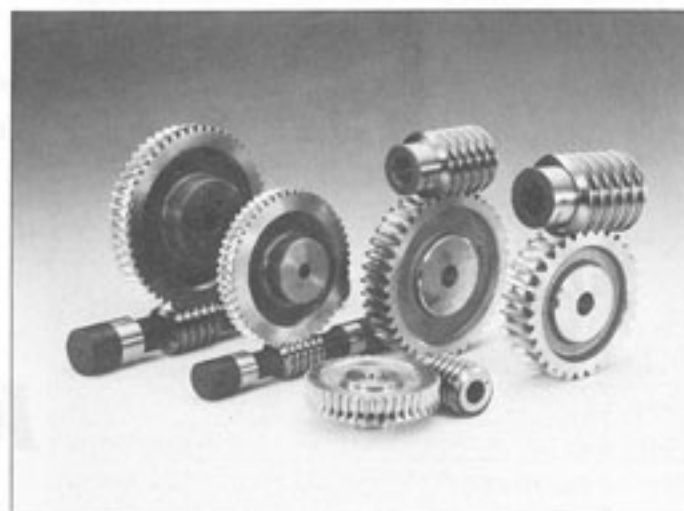
Our lineup includes JIS 1 grade teeth grinding spur gears for quiet transmission of high speeds and high torques, as well as high precision products such as spiral bevel gears, top quality worms with shafts, and worm wheels.

Teeth grinding racks have been newly standardized.

m = module
 m = Modul
 m = module
 m = módulo



**STOCK
GEARS**



MODULE RANGE AND ACCURACY OF STOCK GEARS

Gear with Module 0.5 to 10 Available, and Tooth Accuracy Ranging from Economical Grade to JIS Grade 1.

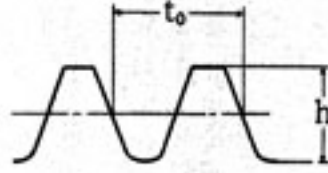
Module Used

Module of stock gear ranges from 0.5 to 10.
The following tooth shapes show rack tooth profiles by module.

$$t_0 = \pi m \quad h = 2.25m$$

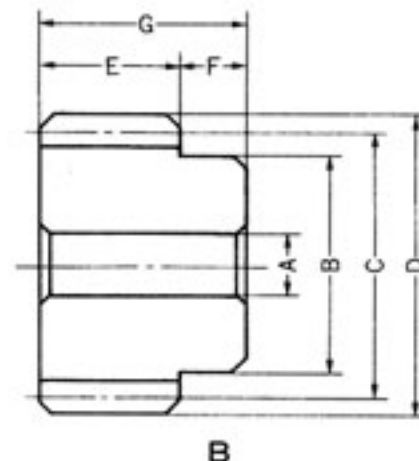
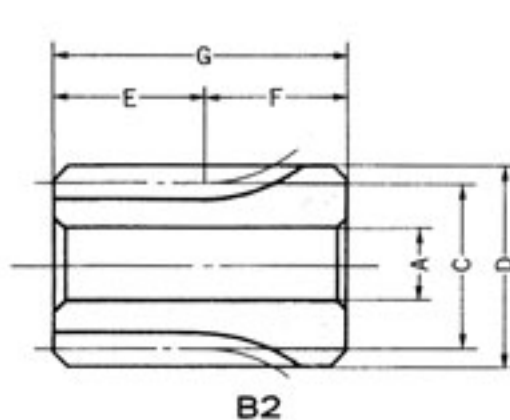
m : Module

(Dimension h varies with backlash and error in outside diameter)



M0.5	M0.8	M1	M1.25
$t_0 = 1.570$ $h = 1.12$	$t_0 = 2.513$ $h = 1.80$	$t_0 = 3.141$ $h = 2.25$	$t_0 = 3.927$ $h = 2.81$
M1.5	M2	M2.5	M3
$t_0 = 4.712$ $h = 3.38$	$t_0 = 6.283$ $h = 4.50$	$t_0 = 7.854$ $h = 5.63$	$t_0 = 9.426$ $h = 6.75$
M3.5	M4	M5	M6
$t_0 = 10.996$ $h = 7.88$	$t_0 = 12.568$ $h = 9.00$	$t_0 = 15.707$ $h = 11.25$	$t_0 = 18.849$ $h = 13.50$
M8	M10		
$t_0 = 25.133$ $h = 18.00$	$t_0 = 31.417$ $h = 22.50$		

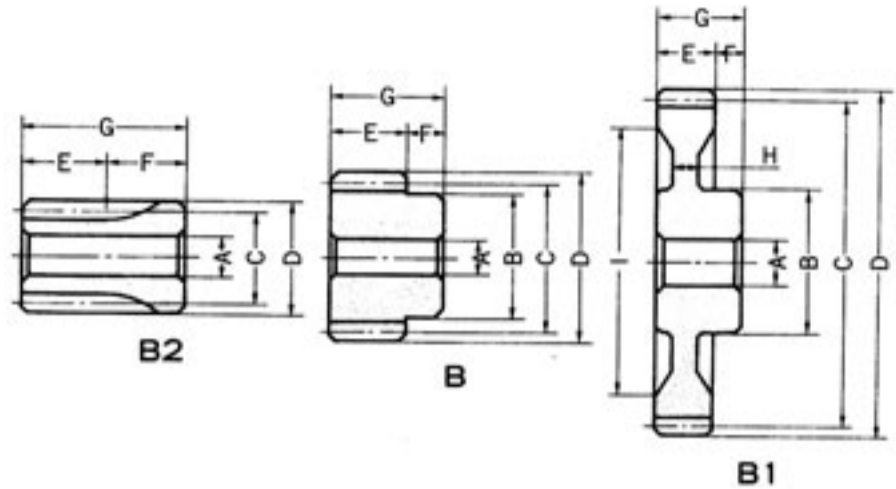
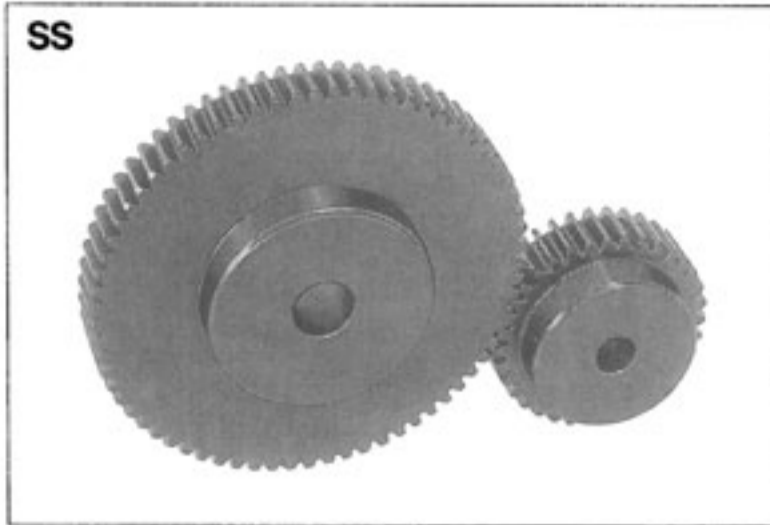
SPUR GEARS (SS)



■ *m*1 Material: S45C(Steel) 20° Pressure Angle Face width: 10 mm

Catalog No.	z	AH7	B	C	D	E	F	G	(Type) Weight-kgf
SS1-15	15	8	17	15.0	17.0	10	20	30	(B2) 0.03
SS1-16	16	8	18	16.0	18.0	10	20	30	(B2) 0.04
SS1-17	17	8	19	17.0	19.0	10	20	30	(B2) 0.05
SS1-18	18	8	20	18.0	20.0	10	20	30	(B2) 0.05
SS1-19	19	8	21	19.0	21.0	10	20	30	(B2) 0.06
SS1-20	20	8	16	20.0	22.0	10	10	20	(B) 0.03
SS1-21	21	8	17	21.0	23.0	10	10	20	(B) 0.03
SS1-22	22	8	18	22.0	24.0	10	10	20	(B) 0.04
SS1-23	23	8	18	23.0	25.0	10	10	20	(B) 0.04
SS1-24	24	8	20	24.0	26.0	10	10	20	(B) 0.05
SS1-25	25	8	20	25.0	27.0	10	10	20	(B) 0.05
SS1-26	26	8	22	26.0	28.0	10	10	20	(B) 0.06
SS1-27	27	8	22	27.0	29.0	10	10	20	(B) 0.06
SS1-28	28	8	22	28.0	30.0	10	10	20	(B) 0.07
SS1-29	29	8	24	29.0	31.0	10	10	20	(B) 0.08
SS1-30	30	10	25	30.0	32.0	10	10	20	(B) 0.08
SS1-32	32	10	26	32.0	34.0	10	10	20	(B) 0.10
SS1-34	34	10	26	34.0	36.0	10	10	20	(B) 0.11
SS1-35	35	10	26	35.0	37.0	10	10	20	(B) 0.11
SS1-36	36	10	28	36.0	38.0	10	10	20	(B) 0.12
SS1-38	38	10	32	38.0	40.0	10	10	20	(B) 0.14
SS1-40	40	10	35	40.0	42.0	10	10	20	(B) 0.16
SS1-42	42	10	35	42.0	44.0	10	10	20	(B) 0.17
SS1-44	44	10	35	44.0	46.0	10	10	20	(B) 0.18
SS1-45	45	10	35	45.0	47.0	10	10	20	(B) 0.18
SS1-46	46	10	35	46.0	48.0	10	10	20	(B) 0.19
SS1-48	48	10	35	48.0	50.0	10	10	20	(B) 0.20
SS1-50	50	10	35	50.0	52.0	10	10	20	(B) 0.22
SS1-52	52	10	35	52.0	54.0	10	10	20	(B) 0.23
SS1-54	54	10	35	54.0	56.0	10	10	20	(B) 0.24
SS1-55	55	10	35	55.0	57.0	10	10	20	(B) 0.25
SS1-56	56	10	35	56.0	58.0	10	10	20	(B) 0.26
SS1-58	58	10	35	58.0	60.0	10	10	20	(B) 0.27
SS1-60	60	10	35	60.0	62.0	10	10	20	(B) 0.28
SS1-62	62	10	40	62.0	64.0	10	10	20	(B) 0.30
SS1-64	64	10	40	64.0	66.0	10	10	20	(B) 0.34
SS1-65	65	10	40	65.0	67.0	10	10	20	(B) 0.35
SS1-66	66	10	40	66.0	68.0	10	10	20	(B) 0.36
SS1-68	68	10	40	68.0	70.0	10	10	20	(B) 0.38
SS1-70	70	10	40	70.0	72.0	10	10	20	(B) 0.40
SS1-72	72	10	40	72.0	74.0	10	10	20	(B) 0.41
SS1-75	75	10	40	75.0	77.0	10	10	20	(B) 0.43
SS1-76	76	10	40	76.0	78.0	10	10	20	(B) 0.45
SS1-80	80	10	40	80.0	82.0	10	10	20	(B) 0.49
SS1-84	84	10	40	84.0	86.0	10	10	20	(B) 0.53
SS1-85	85	10	40	85.0	87.0	10	10	20	(B) 0.55
SS1-88	88	10	40	88.0	90.0	10	10	20	(B) 0.57
SS1-90	90	10	40	90.0	92.0	10	10	20	(B) 0.59
SS1-95	95	10	40	95.0	97.0	10	10	20	(B) 0.66
SS1-96	96	10	40	96.0	98.0	10	10	20	(B) 0.67
SS1-100	100	10	40	100.0	102.0	10	10	20	(B) 0.70
SS1-110	110	15	50	110.0	112.0	10	10	20	(B) 0.87
SS1-120	120	15	50	120.0	122.0	10	10	20	(B) 1.00
SS1-150	150	20	120	150.0	152.0	10	10	20	(B) 2.23
SS1-200	200	20	160	200.0	202.0	10	10	20	(B) 4.00

SPUR GEARS (SS)

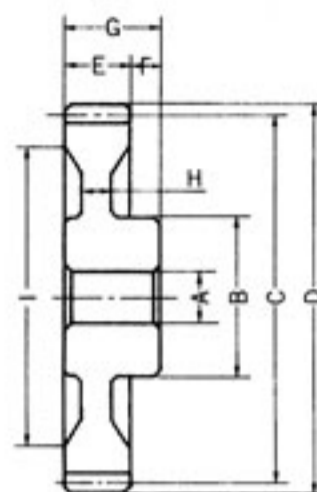
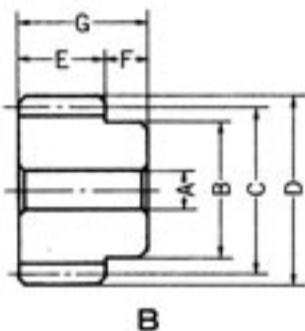
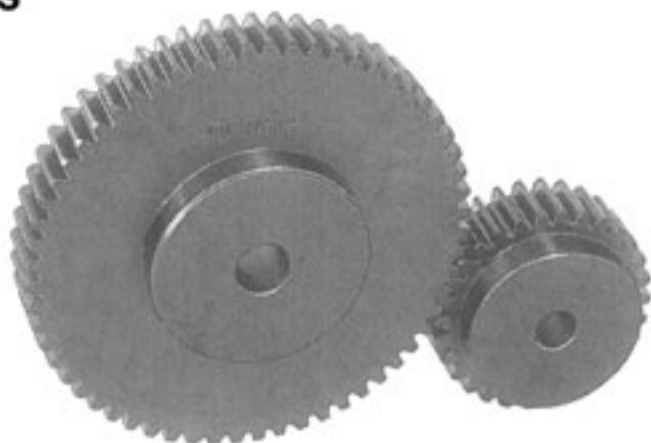


■ m1.5 Material: S45C(Steel) 20° Pressure Angle Face width: 15 mm

Catalog No.	z	AH7	B	C	D	E	F	G	H	I	(Type) Weight-kgf
SS1.5-12	12	8	21	18.0	21.0	15	15	30	—	—	(B2) 0.05
SS1.5-13	13	8	22.5	19.5	22.5	15	15	30	—	—	(B2) 0.07
SS1.5-14	14	8	16	21.0	24.0	15	10	25	—	—	(B) 0.06
SS1.5-15	15	8	18	22.5	25.5	15	10	25	—	—	(B) 0.06
SS1.5-16	16	8	20	24.0	27.0	15	10	25	—	—	(B) 0.07
SS1.5-17	17	8	21	25.5	28.5	15	10	25	—	—	(B) 0.09
SS1.5-18	18	8	22	27.0	30.0	15	10	25	—	—	(B) 0.09
SS1.5-19	19	8	23	28.5	31.5	15	10	25	—	—	(B) 0.11
SS1.5-20	20	8	24	30.0	33.0	15	10	25	—	—	(B) 0.12
SS1.5-21	21	8	25	31.5	34.5	15	10	25	—	—	(B) 0.13
SS1.5-22	22	8	26	33.0	36.0	15	10	25	—	—	(B) 0.15
SS1.5-23	23	8	27	34.5	37.5	15	10	25	—	—	(B) 0.18
SS1.5-24	24	8	28	36.0	39.0	15	10	25	—	—	(B) 0.19
SS1.5-25	25	8	30	37.5	40.5	15	10	25	—	—	(B) 0.20
SS1.5-26	26	10	32	39.0	42.0	15	10	25	—	—	(B) 0.21
SS1.5-27	27	10	34	40.5	43.5	15	10	25	—	—	(B) 0.23
SS1.5-28	28	10	36	42.0	45.0	15	10	25	—	—	(B) 0.24
SS1.5-29	29	10	37	43.5	46.5	15	10	25	—	—	(B) 0.25
SS1.5-30	30	10	38	45.0	48.0	15	10	25	—	—	(B) 0.26
SS1.5-32	32	10	40	48.0	51.0	15	10	25	—	—	(B) 0.30
SS1.5-34	34	10	40	51.0	54.0	15	10	25	—	—	(B) 0.33
SS1.5-35	35	10	42	52.5	55.5	15	10	25	—	—	(B) 0.34
SS1.5-36	36	10	45	54.0	57.0	15	10	25	—	—	(B) 0.39
SS1.5-38	38	12	45	57.0	60.0	15	10	25	—	—	(B) 0.43
SS1.5-40	40	12	45	60.0	63.0	15	10	25	—	—	(B) 0.44
SS1.5-42	42	12	45	63.0	66.0	15	10	25	—	—	(B) 0.47
SS1.5-44	44	12	45	66.0	69.0	15	10	25	—	—	(B) 0.51
SS1.5-45	45	12	45	67.5	70.5	15	10	25	—	—	(B) 0.52
SS1.5-46	46	12	45	69.0	72.0	15	10	25	—	—	(B) 0.57
SS1.5-48	48	12	45	72.0	75.0	15	10	25	—	—	(B) 0.58
SS1.5-50	50	12	45	75.0	78.0	15	10	25	—	—	(B) 0.62
SS1.5-52	52	15	50	78.0	81.0	15	10	25	—	—	(B) 0.70
SS1.5-54	54	15	50	81.0	84.0	15	10	25	—	—	(B) 0.74
SS1.5-55	55	15	50	82.5	85.5	15	10	25	—	—	(B) 0.75
SS1.5-56	56	15	50	84.0	87.0	15	10	25	—	—	(B) 0.77
SS1.5-58	58	15	50	87.0	90.0	15	10	25	—	—	(B) 0.86
SS1.5-60	60	15	50	90.0	93.0	15	10	25	—	—	(B) 0.87
SS1.5-62	62	15	55	93.0	96.0	15	10	25	—	—	(B) 0.99
SS1.5-64	64	15	55	96.0	99.0	15	10	25	—	—	(B) 1.0
SS1.5-65	65	15	55	97.5	100.5	15	10	25	—	—	(B) 1.0
SS1.5-66	66	15	55	99.0	102.0	15	10	25	—	—	(B) 1.1
SS1.5-68	68	15	55	102.0	105.0	15	10	25	—	—	(B) 1.1
SS1.5-70	70	15	55	105.0	108.0	15	10	25	—	—	(B) 1.2
SS1.5-72	72	15	55	108.0	111.0	15	10	25	—	—	(B) 1.2
SS1.5-75	75	15	60	112.5	115.5	15	10	25	—	—	(B) 1.4
SS1.5-76	76	15	60	114.0	117.0	15	10	25	—	—	(B) 1.5
SS1.5-80	80	15	60	120.0	123.0	15	10	25	—	—	(B) 1.5
SS1.5-84	84	15	60	126.0	129.0	15	10	25	—	—	(B) 1.7
SS1.5-85	85	15	60	127.5	130.0	15	10	25	—	—	(B) 1.7
SS1.5-88	88	15	60	132.0	135.0	15	10	25	—	—	(B) 1.9
SS1.5-90	90	15	60	135.0	138.0	15	10	25	—	—	(B) 1.9
SS1.5-95	95	15	60	142.5	145.5	15	10	25	—	—	(B) 2.1
SS1.5-100	100	15	60	150.0	153.0	15	10	25	—	—	(B) 1.8
SS1.5-120	120	15	70	180.0	183.0	15	10	25	10	133	(B1) 2.8
SS1.5-150	150	20	180	225.0	228.0	15	10	25	—	—	(B) 6.62
SS1.5-200	200	25	240	300.0	303.0	15	10	25	—	—	(B) 11.8

SPUR GEARS (SS)

SS

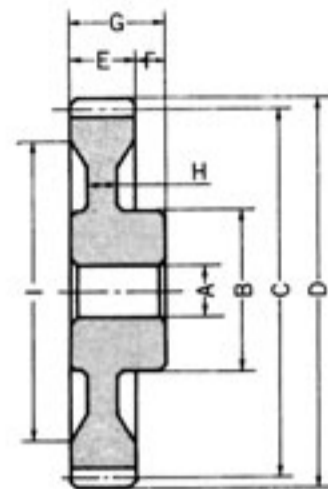
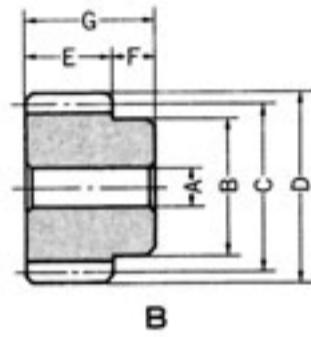
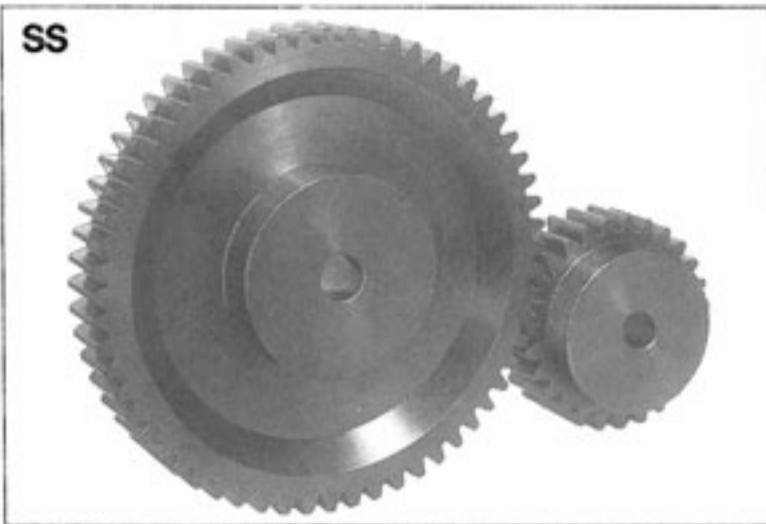


B1

■ m2 Material: S45C(Steel) 20° Pressure Angle Face width: 20 mm

Catalog No.	z	AH7	B	C	D	E	F	G	H	I	(Type) Weight-kgf
SS2- 12	12	10	18	24.0	28.0	20	10	30	—	—	(B) 0.09
SS2- 13	13	10	20	26.0	30.0	20	10	30	—	—	(B) 0.10
SS2- 14	14	10	20	28.0	32.0	20	10	30	—	—	(B) 0.10
SS2- 15	15	12	24	30.0	34.0	20	10	30	—	—	(B) 0.11
SS2- 16	16	12	26	32.0	36.0	20	10	30	—	—	(B) 0.15
SS2- 17	17	12	28	34.0	38.0	20	10	30	—	—	(B) 0.18
SS2- 18	18	12	30	36.0	40.0	20	10	30	—	—	(B) 0.20
SS2- 19	19	12	31	38.0	42.0	20	10	30	—	—	(B) 0.22
SS2- 20	20	12	32	40.0	44.0	20	10	30	—	—	(B) 0.22
SS2- 21	21	12	34	42.0	46.0	20	10	30	—	—	(B) 0.28
SS2- 22	22	12	36	44.0	48.0	20	10	30	—	—	(B) 0.30
SS2- 23	23	12	37	46.0	50.0	20	10	30	—	—	(B) 0.32
SS2- 24	24	12	38	48.0	52.0	20	10	30	—	—	(B) 0.35
SS2- 25	25	12	40	50.0	54.0	20	10	30	—	—	(B) 0.40
SS2- 26	26	12	42	52.0	56.0	20	10	30	—	—	(B) 0.42
SS2- 27	27	12	45	54.0	58.0	20	10	30	—	—	(B) 0.47
SS2- 28	28	12	45	56.0	60.0	20	10	30	—	—	(B) 0.50
SS2- 29	29	12	47	58.0	62.0	20	10	30	—	—	(B) 0.58
SS2- 30	30	12	50	60.0	64.0	20	10	30	—	—	(B) 0.59
SS2- 32	32	12	50	64.0	68.0	20	10	30	—	—	(B) 0.64
SS2- 34	34	12	50	68.0	72.0	20	10	30	—	—	(B) 0.74
SS2- 35	35	12	52	70.0	74.0	20	10	30	—	—	(B) 0.75
SS2- 36	36	12	55	72.0	76.0	20	10	30	—	—	(B) 0.80
SS2- 38	38	12	55	76.0	80.0	20	10	30	—	—	(B) 0.90
SS2- 40	40	15	55	80.0	84.0	20	10	30	—	—	(B) 0.93
SS2- 42	42	15	55	84.0	88.0	20	10	30	—	—	(B) 1.0
SS2- 44	44	15	55	88.0	92.0	20	10	30	—	—	(B) 1.1
SS2- 45	45	15	55	90.0	94.0	20	10	30	—	—	(B) 1.1
SS2- 46	46	15	55	92.0	96.0	20	10	30	—	—	(B) 1.2
SS2- 48	48	15	55	96.0	100.0	20	10	30	—	—	(B) 1.3
SS2- 50	50	15	55	100.0	104.0	20	10	30	—	—	(B) 1.4
SS2- 52	52	15	55	104.0	108.0	20	10	30	—	—	(B) 1.5
SS2- 54	54	15	55	108.0	112.0	20	10	30	—	—	(B) 1.6
SS2- 55	55	15	55	110.0	114.0	20	10	30	—	—	(B) 1.6
SS2- 56	56	15	55	112.0	116.0	20	10	30	—	—	(B) 1.7
SS2- 58	58	15	60	116.0	120.0	20	10	30	—	—	(B) 1.8
SS2- 60	60	15	60	120.0	124.0	20	10	30	—	—	(B) 1.9
SS2- 62	62	15	60	124.0	128.0	20	10	30	—	—	(B) 2.0
SS2- 64	64	15	60	128.0	132.0	20	10	30	—	—	(B) 2.1
SS2- 65	65	15	60	130.0	134.0	20	10	30	—	—	(B) 2.3
SS2- 66	66	15	60	132.0	136.0	20	10	30	—	—	(B) 2.4
SS2- 68	68	15	60	136.0	140.0	20	10	30	—	—	(B) 2.6
SS2- 70	70	15	60	140.0	144.0	20	10	30	—	—	(B) 2.6
SS2- 72	72	15	60	144.0	148.0	20	10	30	—	—	(B) 2.7
SS2- 75	75	20	60	150.0	154.0	20	10	30	—	—	(B) 2.9
SS2- 76	76	20	60	152.0	156.0	20	10	30	—	—	(B) 3.1
SS2- 80	80	20	60	160.0	164.0	20	10	30	12	136	(B1) 2.6
SS2- 84	84	20	70	168.0	172.0	20	10	30	12	140	(B1) 3.0
SS2- 85	85	20	70	170.0	174.0	20	10	30	12	146	(B1) 3.0
SS2- 88	88	20	70	176.0	180.0	20	10	30	12	150	(B1) 3.4
SS2- 90	90	20	70	180.0	184.0	20	10	30	12	156	(B1) 3.4
SS2- 95	95	20	70	190.0	194.0	20	10	30	12	166	(B1) 3.7
SS2- 100	100	20	70	200.0	204.0	20	10	30	12	176	(B1) 3.8
SS2- 120	120	20	90	240.0	244.0	20	10	30	12	210	(B1) 6.2
SS2- 150	150	25	240	300.0	304.0	20	10	30	—	—	(B) 14.5

SPUR GEARS (SS)

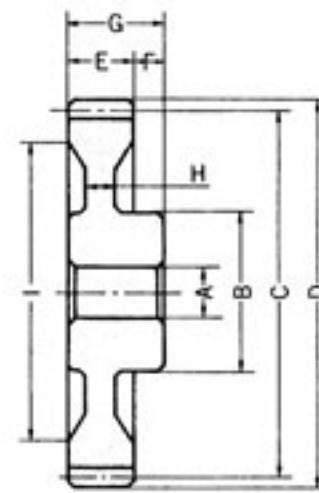
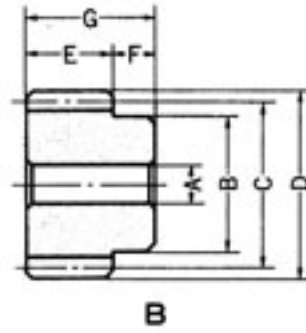
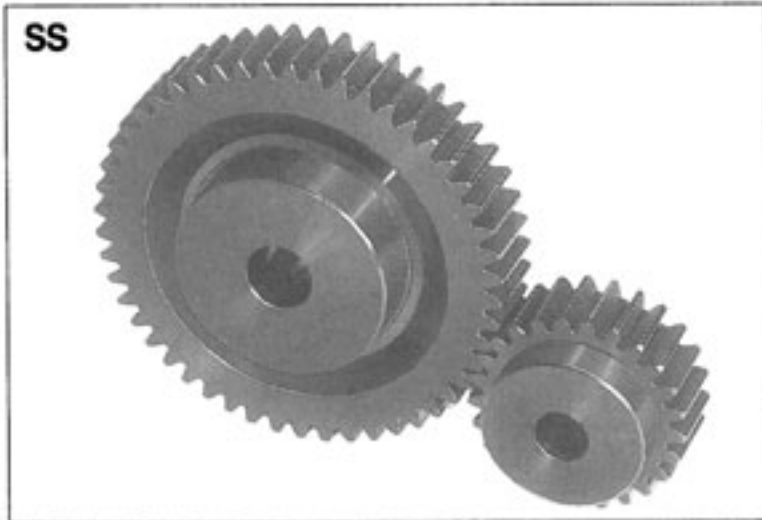


B1

■ m2.5 Material: S45C(Steel) 20° Pressure Angle Face width: 25 mm

Catalog No.	z	AH7	B	C	D	E	F	G	H	I	(Type) Weight-kgf
SS2.5- 12	12	12	23	30.0	35.0	25	12	37	—	—	(B) 0.14
SS2.5- 13	13	12	25	32.5	37.5	25	12	37	—	—	(B) 0.17
SS2.5- 14	14	12	25	35.0	40.0	25	12	37	—	—	(B) 0.20
SS2.5- 15	15	15	30	37.5	42.5	25	12	37	—	—	(B) 0.23
SS2.5- 16	16	15	32	40.0	45.0	25	12	37	—	—	(B) 0.25
SS2.5- 17	17	15	35	42.5	47.5	25	12	37	—	—	(B) 0.28
SS2.5- 18	18	15	38	45.0	50.0	25	12	37	—	—	(B) 0.35
SS2.5- 19	19	15	39	47.5	52.5	25	12	37	—	—	(B) 0.40
SS2.5- 20	20	15	40	50.0	55.0	25	12	37	—	—	(B) 0.44
SS2.5- 21	21	15	42	52.5	57.5	25	12	37	—	—	(B) 0.49
SS2.5- 22	22	15	44	55.0	60.0	25	12	37	—	—	(B) 0.53
SS2.5- 23	23	15	46	57.5	62.5	25	12	37	—	—	(B) 0.58
SS2.5- 24	24	15	48	60.0	65.0	25	12	37	—	—	(B) 0.65
SS2.5- 25	25	15	50	62.5	67.5	25	12	37	—	—	(B) 0.70
SS2.5- 26	26	15	55	65.0	70.0	25	12	37	—	—	(B) 0.83
SS2.5- 27	27	15	60	67.5	72.5	25	12	37	—	—	(B) 0.92
SS2.5- 28	28	15	60	70.0	75.0	25	12	37	—	—	(B) 1.0
SS2.5- 29	29	15	62	72.5	77.5	25	12	37	—	—	(B) 1.1
SS2.5- 30	30	15	65	75.0	80.0	25	12	37	—	—	(B) 1.2
SS2.5- 32	32	15	70	80.0	85.0	25	12	37	—	—	(B) 1.3
SS2.5- 34	34	15	70	85.0	90.0	25	12	37	—	—	(B) 1.4
SS2.5- 35	35	15	70	87.5	92.5	25	12	37	—	—	(B) 1.5
SS2.5- 36	36	15	70	90.0	95.0	25	12	37	—	—	(B) 1.6
SS2.5- 38	38	20	70	95.0	100.0	25	12	37	—	—	(B) 1.7
SS2.5- 40	40	20	70	100.0	105.0	25	12	37	—	—	(B) 1.8
SS2.5- 42	42	20	70	105.0	110.0	25	12	37	—	—	(B) 2.0
SS2.5- 44	44	20	70	110.0	115.0	25	12	37	—	—	(B) 2.1
SS2.5- 45	45	20	70	112.5	117.5	25	12	37	—	—	(B) 2.2
SS2.5- 46	46	20	70	115.0	120.0	25	12	37	—	—	(B) 2.3
SS2.5- 48	48	20	70	120.0	125.0	25	12	37	—	—	(B) 2.5
SS2.5- 50	50	20	70	125.0	130.0	25	12	37	—	—	(B) 2.7
SS2.5- 52	52	20	70	130.0	135.0	25	12	37	—	—	(B) 3.0
SS2.5- 54	54	20	70	135.0	140.0	25	12	37	—	—	(B) 3.1
SS2.5- 55	55	20	70	137.5	142.5	25	12	37	—	—	(B) 3.2
SS2.5- 56	56	20	70	140.0	145.0	25	12	37	—	—	(B) 3.3
SS2.5- 58	58	20	70	145.0	150.0	25	12	37	—	—	(B) 3.7
SS2.5- 60	60	25	70	150.0	155.0	25	12	37	10	127	(B3) 2.7
SS2.5- 62	62	25	80	155.0	160.0	25	12	37	15	130	(B1) 3.1
SS2.5- 64	64	25	80	160.0	165.0	25	12	37	15	131	(B1) 3.5
SS2.5- 65	65	25	80	162.5	167.5	25	12	37	15	134	(B1) 3.7
SS2.5- 66	66	25	80	165.0	170.0	25	12	37	15	140	(B1) 3.9
SS2.5- 68	68	25	80	170.0	175.0	25	12	37	15	140	(B1) 4.1
SS2.5- 70	70	25	80	175.0	180.0	25	12	37	15	146	(B1) 4.2
SS2.5- 72	72	25	80	180.0	185.0	25	12	37	15	151	(B1) 4.4
SS2.5- 75	75	25	80	187.5	192.5	25	12	37	15	159	(B1) 4.7
SS2.5- 76	76	25	80	190.0	195.0	25	12	37	15	160	(B1) 5.0
SS2.5- 80	80	25	80	200.0	205.0	25	12	37	10	177	(B3) 4.1
SS2.5- 90	90	30	90	225.0	230.0	25	12	37	10	202	(B3) 5.6
SS2.5- 100	100	30	90	250.0	255.0	25	12	37	10	227	(B3) 6.5
SS2.5- 120	120	30	100	300.0	305.0	25	12	37	10	277	(B3) 9.0

SPUR GEARS (SS)

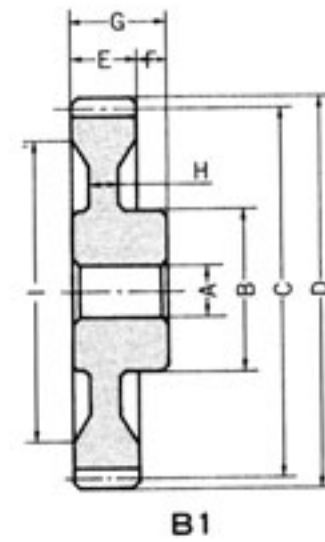
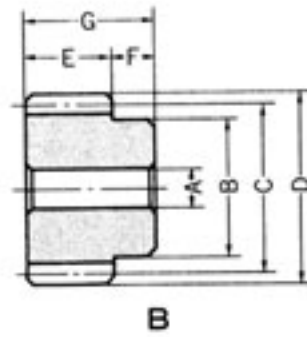
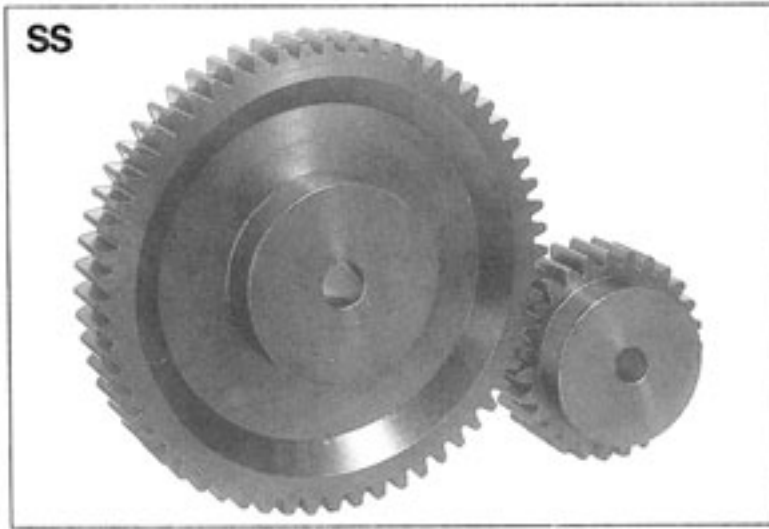


B1

■ m3 Material: S45C(Steel) 20° Pressure Angle Face width: 30 mm

Catalog No.	z	AH7	B	C	D	E	F	G	H	I	(Type) Weight-kgf
SS3- 12	12	15	28	36.0	42.0	30	15	45	—	—	(B) 0.25
SS3- 13	13	15	30	39.0	45.0	30	15	45	—	—	(B) 0.30
SS3- 14	14	15	32	42.0	48.0	30	15	45	—	—	(B) 0.35
SS3- 15	15	15	36	45.0	51.0	30	15	45	—	—	(B) 0.40
SS3- 16	16	15	38	48.0	54.0	30	15	45	—	—	(B) 0.50
SS3- 17	17	15	39	51.0	57.0	30	15	45	—	—	(B) 0.65
SS3- 18	18	15	40	54.0	60.0	30	15	45	—	—	(B) 0.67
SS3- 19	19	15	45	57.0	63.0	30	15	45	—	—	(B) 0.73
SS3- 20	20	15	50	60.0	66.0	30	15	45	—	—	(B) 0.80
SS3- 21	21	15	52	63.0	69.0	30	15	45	—	—	(B) 1.0
SS3- 22	22	15	54	66.0	72.0	30	15	45	—	—	(B) 1.1
SS3- 23	23	15	56	69.0	75.0	30	15	45	—	—	(B) 1.1
SS3- 24	24	15	58	72.0	78.0	30	15	45	—	—	(B) 1.2
SS3- 25	25	20	60	75.0	81.0	30	15	45	—	—	(B) 1.3
SS3- 26	26	20	65	78.0	84.0	30	15	45	—	—	(B) 1.5
SS3- 27	27	20	65	81.0	87.0	30	15	45	—	—	(B) 1.6
SS3- 28	28	20	70	84.0	90.0	30	15	45	—	—	(B) 1.7
SS3- 29	29	20	70	87.0	93.0	30	15	45	—	—	(B) 1.7
SS3- 30	30	20	75	90.0	96.0	30	15	45	—	—	(B) 1.8
SS3- 32	32	20	75	96.0	102.0	30	15	45	—	—	(B) 2.1
SS3- 34	34	20	80	102.0	108.0	30	15	45	—	—	(B) 2.4
SS3- 35	35	20	80	105.0	111.0	30	15	45	—	—	(B) 2.5
SS3- 36	36	20	80	108.0	114.0	30	15	45	—	—	(B) 2.6
SS3- 38	38	25	80	114.0	120.0	30	15	45	—	—	(B) 3.0
SS3- 40	40	25	80	120.0	126.0	30	15	45	—	—	(B) 3.1
SS3- 42	42	25	80	126.0	132.0	30	15	45	—	—	(B) 3.4
SS3- 44	44	25	80	132.0	138.0	30	15	45	—	—	(B) 3.7
SS3- 45	45	25	80	135.0	141.0	30	15	45	—	—	(B) 3.8
SS3- 46	46	25	80	138.0	144.0	30	15	45	—	—	(B) 4.2
SS3- 48	48	25	80	144.0	150.0	30	15	45	—	—	(B) 4.3
SS3- 50	50	25	80	150.0	156.0	30	15	45	10	123	(B3) 3.6
SS3- 52	52	25	80	156.0	162.0	30	15	45	16	126	(B1) 4.5
SS3- 54	54	25	80	162.0	168.0	30	15	45	16	132	(B1) 4.6
SS3- 55	55	25	80	165.0	171.0	30	15	45	16	131	(B1) 4.8
SS3- 56	56	25	80	168.0	174.0	30	15	45	16	134	(B1) 4.8
SS3- 58	58	25	80	174.0	180.0	30	15	45	16	144	(B1) 5.5
SS3- 60	60	25	80	180.0	186.0	30	15	45	10	153	(B3) 4.5
SS3- 62	62	25	80	186.0	192.0	30	15	45	16	150	(B1) 6.0
SS3- 64	64	25	80	192.0	198.0	30	15	45	16	158	(B1) 6.2
SS3- 65	65	25	80	195.0	201.0	30	15	45	16	161	(B1) 6.3
SS3- 66	66	25	90	198.0	204.0	30	15	45	16	160	(B1) 6.5
SS3- 68	68	25	90	204.0	210.0	30	15	45	16	170	(B1) 6.8
SS3- 70	70	25	90	210.0	216.0	30	15	45	16	176	(B1) 7.4
SS3- 72	72	25	90	216.0	222.0	30	15	45	16	182	(B1) 7.6
SS3- 75	75	25	90	225.0	231.0	30	15	45	16	190	(B1) 8.0
SS3- 76	76	25	90	228.0	234.0	30	15	45	16	190	(B1) 8.7
SS3- 80	80	30	90	240.0	246.0	30	15	45	10	213	(B3) 7.2
SS3- 90	90	30	100	270.0	276.0	30	15	45	16	240	(B1)10.5
SS3-100	100	30	100	300.0	306.0	30	15	45	10	266	(B3)10.2
SS3-120	120	30	130	360.0	366.0	30	15	45	10	333	(B3)14.9

SPUR GEARS (SS)

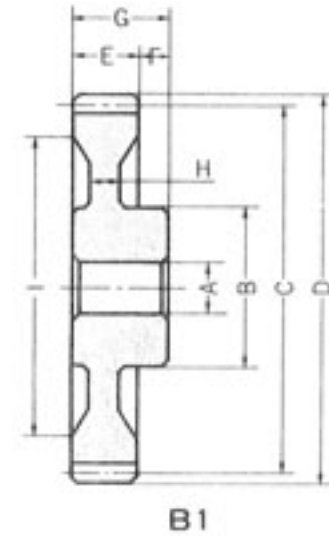
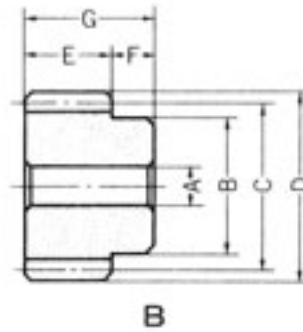
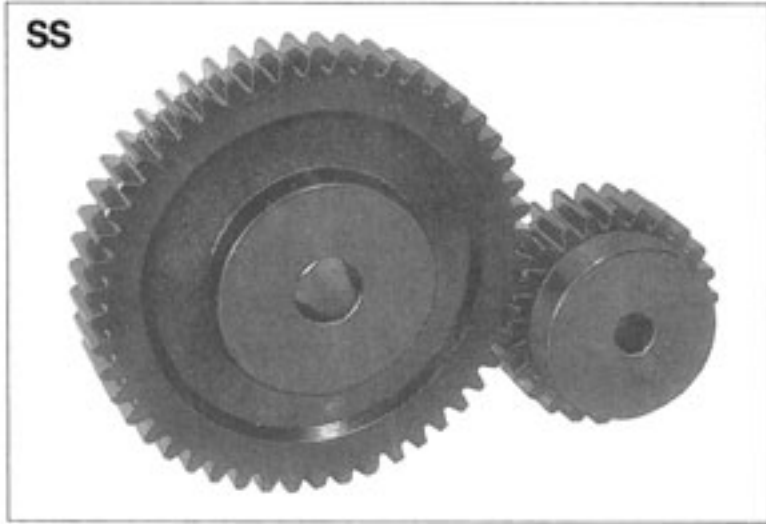


■ m4 Material: S45C(Steel) 20° Pressure Angle Face width: 40 mm

Catalog No.	z	AH7	B	C	D	E	F	G	H	I	(Type) Weight-kgf
SS4- 12	12	20	35	48.0	56.0	40	20	60	—	—	(B) 0.55
SS4- 13	13	20	38	52.0	60.0	40	20	60	—	—	(B) 0.67
SS4- 14	14	20	40	56.0	64.0	40	20	60	—	—	(B) 0.80
SS4- 15	15	20	45	60.0	68.0	40	20	60	—	—	(B) 0.95
SS4- 16	16	20	50	64.0	72.0	40	20	60	—	—	(B) 1.1
SS4- 17	17	20	53	68.0	76.0	40	20	60	—	—	(B) 1.3
SS4- 18	18	20	55	72.0	80.0	40	20	60	—	—	(B) 1.5
SS4- 19	19	20	60	76.0	84.0	40	20	60	—	—	(B) 1.7
SS4- 20	20	20	65	80.0	88.0	40	20	60	—	—	(B) 1.9
SS4- 21	21	20	69	84.0	92.0	40	20	60	—	—	(B) 2.2
SS4- 22	22	20	73	88.0	96.0	40	20	60	—	—	(B) 2.4
SS4- 23	23	20	77	92.0	100.0	40	20	60	—	—	(B) 2.6
SS4- 24	24	20	80	96.0	104.0	40	20	60	—	—	(B) 2.9
SS4- 25	25	20	84	100.0	108.0	40	20	60	—	—	(B) 3.2
SS4- 26	26	20	87	104.0	112.0	40	20	60	—	—	(B) 3.5
SS4- 27	27	20	90	108.0	116.0	40	20	60	—	—	(B) 3.8
SS4- 28	28	20	95	112.0	120.0	40	20	60	—	—	(B) 4.2
SS4- 29	29	20	95	116.0	124.0	40	20	60	—	—	(B) 4.4
SS4- 30	30	20	100	120.0	128.0	40	20	60	—	—	(B) 4.5
SS4- 32	32	22	100	128.0	136.0	40	16	56	—	—	(B) 4.8
SS4- 34	34	22	100	136.0	144.0	40	16	56	—	—	(B) 5.5
SS4- 35	35	22	100	140.0	148.0	40	16	56	—	—	(B) 5.6
SS4- 36	36	22	100	144.0	152.0	40	16	56	—	—	(B) 5.7
SS4- 38	38	22	100	152.0	160.0	40	16	56	—	—	(B) 7.1
SS4- 40	40	25	100	160.0	168.0	40	16	56	—	—	(B) 7.2
SS4- 42	42	25	100	168.0	176.0	40	16	56	—	—	(B) 7.7
SS4- 44	44	25	100	176.0	184.0	40	16	56	—	—	(B) 8.2
SS4- 45	45	25	100	180.0	188.0	40	16	56	—	—	(B) 8.8
SS4- 46	46	25	100	184.0	192.0	40	16	56	—	—	(B) 9.7
SS4- 48	48	25	100	192.0	200.0	40	16	50	26	150	(B1) 9.0
SS4- 50	50	30	100	200.0	208.0	40	16	56	12	168	(B3) 7.8
SS4- 52	52	30	100	208.0	216.0	40	16	56	26	165	(B1)10.0
SS4- 54	54	30	100	216.0	224.0	40	16	56	26	175	(B1)10.5
SS4- 55	55	30	100	220.0	228.0	40	16	56	26	178	(B1)11.0
SS4- 56	56	30	100	224.0	232.0	40	16	56	26	182	(B1)11.5
SS4- 58	58	30	110	232.0	240.0	40	16	56	26	190	(B1)12.0
SS4- 60	60	30	110	240.0	248.0	40	16	56	12	208	(B3)10.5
SS4- 62	62	30	110	248.0	256.0	40	16	56	20	210	(B1)12.5
SS4- 64	64	30	110	256.0	264.0	40	16	56	16	214	(B1)12.5
SS4- 65	65	30	110	260.0	268.0	40	16	56	16	218	(B1)12.8
SS4- 66	66	30	120	264.0	272.0	40	16	56	16	220	(B1)13.0
SS4- 68	68	30	120	272.0	280.0	40	16	56	16	225	(B1)14.0
SS4- 70	70	30	120	280.0	288.0	40	16	56	12	248	(B3)13.4
SS4- 80	80	30	120	320.0	328.0	40	16	56	12	288	(B3)16.5

SPUR GEARS (SS)

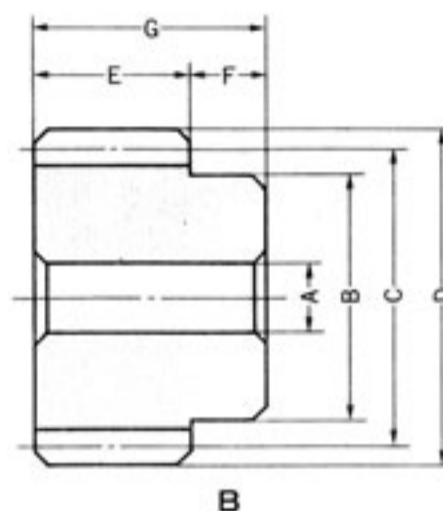
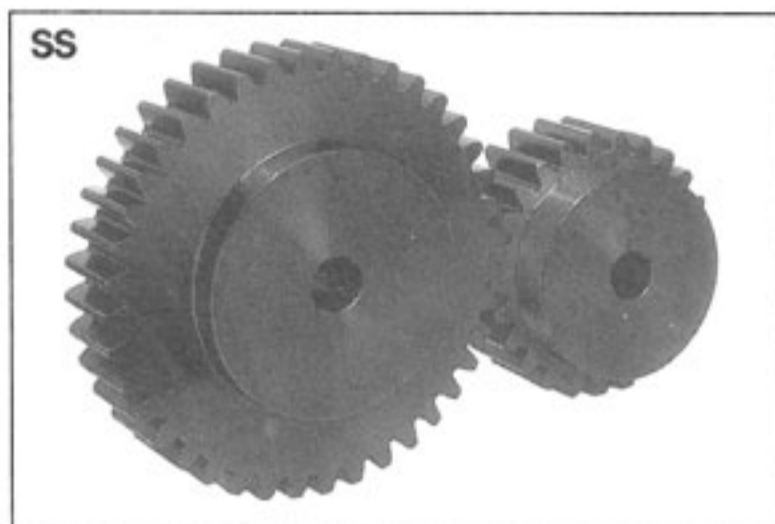
SS



■ m5 Material: S45C(Steel) 20° Pressure Angle Face width: 50 mm

Catalog No.	z	AH7	B	C	D	E	F	G	H	I	(Type) Weight-kgf
SS5- 12	12	22	46	60.0	70.0	50	25	75	—	—	(B) 1.2
SS5- 13	13	22	50	65.0	75.0	50	25	75	—	—	(B) 1.5
SS5- 14	14	22	52	70.0	80.0	50	25	75	—	—	(B) 1.7
SS5- 15	15	22	60	75.0	85.0	50	25	75	—	—	(B) 2.0
SS5- 16	16	22	65	80.0	90.0	50	25	75	—	—	(B) 2.3
SS5- 17	17	22	68	85.0	95.0	50	25	75	—	—	(B) 2.6
SS5- 18	18	22	70	90.0	100.0	50	25	75	—	—	(B) 2.9
SS5- 19	19	22	76	95.0	105.0	50	25	75	—	—	(B) 3.5
SS5- 20	20	22	82	100.0	110.0	50	25	75	—	—	(B) 3.8
SS5- 21	21	25	90	105.0	115.0	50	25	75	—	—	(B) 4.4
SS5- 22	22	25	95	110.0	120.0	50	25	75	—	—	(B) 4.8
SS5- 23	23	25	100	115.0	125.0	50	25	75	—	—	(B) 5.5
SS5- 24	24	25	100	120.0	130.0	50	25	75	—	—	(B) 5.7
SS5- 25	25	25	105	125.0	135.0	50	25	75	—	—	(B) 6.1
SS5- 26	26	25	110	130.0	140.0	50	25	75	—	—	(B) 6.6
SS5- 27	27	25	110	135.0	145.0	50	25	75	—	—	(B) 7.6
SS5- 28	28	25	110	140.0	150.0	50	25	75	—	—	(B) 8.0
SS5- 29	29	25	115	145.0	155.0	50	25	75	—	—	(B) 8.2
SS5- 30	30	25	120	150.0	160.0	50	25	75	—	—	(B) 8.8
SS5- 32	32	30	120	160.0	170.0	50	21	71	—	—	(B) 9.8
SS5- 34	34	30	120	170.0	180.0	50	21	71	—	—	(B) 11.8
SS5- 35	35	30	120	175.0	185.0	50	21	71	—	—	(B) 12
SS5- 36	36	30	120	180.0	190.0	50	21	71	—	—	(B) 12
SS5- 38	38	30	120	190.0	200.0	50	21	71	—	—	(B) 14
SS5- 40	40	30	120	200.0	210.0	50	21	71	36	160	(B1)13
SS5- 42	42	30	120	210.0	220.0	50	21	71	36	170	(B1)14
SS5- 44	44	30	120	220.0	230.0	50	21	71	36	175	(B1)15
SS5- 45	45	30	120	225.0	235.0	50	21	71	36	185	(B1)16
SS5- 46	46	30	120	230.0	240.0	50	21	71	30	185	(B1)16
SS5- 48	48	30	120	240.0	250.0	50	21	71	30	200	(B1)17
SS5- 50	50	30	120	250.0	260.0	50	21	71	16	212	(B3)15
SS5- 52	52	30	130	260.0	270.0	50	21	71	30	220	(B1)18
SS5- 54	54	30	130	270.0	280.0	50	21	71	30	230	(B1)19
SS5- 55	55	30	130	275.0	285.0	50	21	71	30	235	(B1)20
SS5- 56	56	30	130	280.0	290.0	50	21	71	30	240	(B1)21
SS5- 58	58	30	130	290.0	300.0	50	21	71	30	240	(B1)22
SS5- 60	60	30	130	300.0	310.0	50	21	71	20	260	(B3)22.2

SPUR GEARS (SS)



■ m6 Material: S45C(Steel) 20° Pressure Angle Face width: 60 mm

Catalog No.	z	AH7	B	C	D	E	F	G	(Type) Weight-kgf
SS6- 12	12	25	55	72.0	84.0	60	28	88	(B) 2.0
SS6- 13	13	25	58	78.0	90.0	60	28	88	(B) 2.5
SS6- 14	14	25	60	84.0	96.0	60	28	88	(B) 2.8
SS6- 15	15	25	70	90.0	102.0	60	28	88	(B) 3.4
SS6- 16	16	25	75	96.0	108.0	60	28	88	(B) 3.9
SS6- 17	17	25	78	102.0	114.0	60	28	88	(B) 4.4
SS6- 18	18	25	80	108.0	120.0	60	28	88	(B) 5.0
SS6- 19	19	25	90	114.0	126.0	60	28	88	(B) 5.8
SS6- 20	20	25	100	120.0	132.0	60	28	88	(B) 6.5
SS6- 21	21	28	105	126.0	138.0	60	28	88	(B) 7.5
SS6- 22	22	28	110	132.0	144.0	60	28	88	(B) 8.1
SS6- 23	23	28	115	138.0	150.0	60	28	88	(B) 8.9
SS6- 24	24	28	120	144.0	156.0	60	28	88	(B) 9.8
SS6- 25	25	28	125	150.0	162.0	60	28	88	(B) 10.5
SS6- 26	26	28	130	156.0	168.0	60	28	88	(B) 11.4
SS6- 27	27	28	135	162.0	174.0	60	28	88	(B) 12.1
SS6- 28	28	28	140	168.0	180.0	60	28	88	(B) 12.7
SS6- 30	30	30	150	180.0	192.0	60	28	88	(B) 15.1
SS6- 32	32	30	150	192.0	204.0	60	23	83	(B) 18
SS6- 34	34	30	150	204.0	216.0	60	23	83	(B) 19
SS6- 35	35	30	150	210.0	222.0	60	23	83	(B) 19
SS6- 36	36	30	150	216.0	228.0	60	23	83	(B) 22
SS6- 38	38	30	150	228.0	240.0	60	23	83	(B) 23
SS6- 40	40	30	150	240.0	252.0	60	23	83	(B) 24
SS6- 42	42	40	150	252.0	264.0	60	23	83	(B) 27
SS6- 44	44	40	150	264.0	276.0	60	23	83	(B) 30
SS6- 45	45	40	180	270.0	282.0	60	23	83	(B) 31
SS6- 46	46	40	180	276.0	288.0	60	23	83	(B) 34
SS6- 48	48	40	180	288.0	300.0	60	23	83	(B) 35
SS6- 50	50	40	180	300.0	312.0	60	23	83	(B) 37

■ m8 Material: S45C(Steel) 20° Pressure Angle Face width: 75 mm

SS8- 12	12	28	75	96.0	112.0	75	35	110	(B) 4.8
SS8- 13	13	28	80	104.0	120.0	75	35	110	(B) 5.8
SS8- 14	14	28	85	112.0	128.0	75	35	110	(B) 6.6
SS8- 15	15	28	90	120.0	136.0	75	35	110	(B) 7.6
SS8- 16	16	28	100	128.0	144.0	75	35	110	(B) 8.9
SS8- 17	17	28	105	136.0	152.0	75	35	110	(B) 10
SS8- 18	18	28	110	144.0	160.0	75	35	110	(B) 12
SS8- 19	19	28	120	152.0	168.0	75	35	110	(B) 13
SS8- 20	20	28	130	160.0	176.0	75	35	110	(B) 15
SS8- 21	21	30	140	168.0	184.0	75	35	110	(B) 17
SS8- 22	22	30	150	176.0	192.0	75	35	110	(B) 19
SS8- 23	23	30	155	184.0	200.0	75	35	110	(B) 20
SS8- 24	24	30	160	192.0	208.0	75	35	110	(B) 22
SS8- 25	25	30	170	200.0	216.0	75	35	110	(B) 24
SS8- 26	26	30	170	208.0	224.0	75	35	110	(B) 28
SS8- 27	27	30	170	216.0	232.0	75	35	110	(B) 30
SS8- 28	28	30	180	224.0	240.0	75	35	110	(B) 33
SS8- 30	30	30	180	240.0	256.0	75	35	110	(B) 36