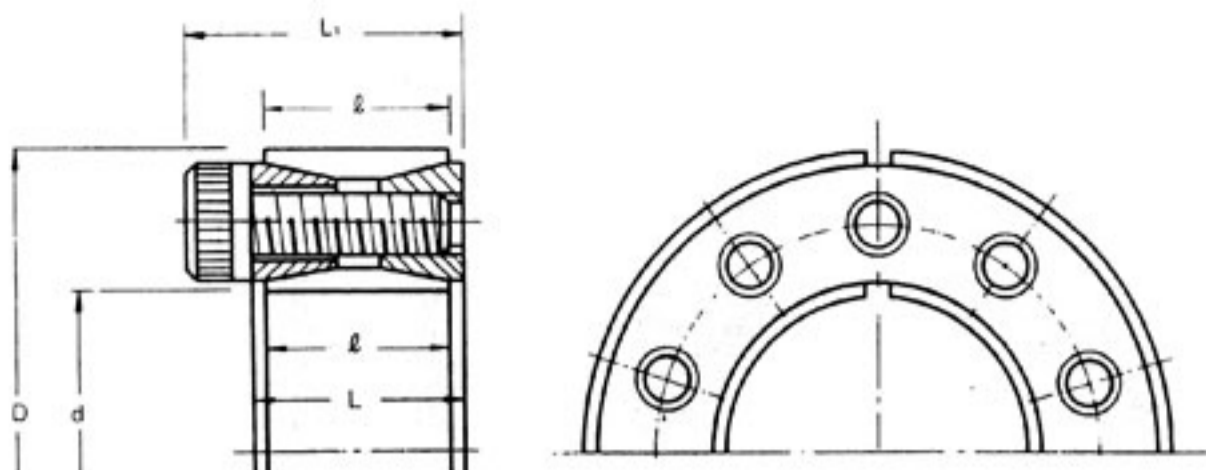


(Conversion)
 1 N·m = 0.1020 kgf·m
 1 MPa = 0.1020 kgf/mm²



Model Number Inside Dia. × Outside Dia. (d × D)	Dimensions (mm)			Transmissible Torque M (N·m)	Transmissible Thrust Pax (kN)	Contact Pressure (MPa)		Locking Bolts			Weight (kg)
	L	l	L ₁			Shaft	Hub Bore	Quantity	Size	Tightening Torque Ma (N·m)	
PL019 × 047	20	18	26	245	26.5	210	85	6	M 6 × 18	16.7	0.20
PL020 × 047	20	18	26	265	26.5	199	85	6	M 6 × 18	16.7	0.20
PL022 × 047	20	18	26	294	26.5	181	85	6	M 6 × 18	16.7	0.19
PL024 × 050	20	18	26	402	33.3	211	101	8	M 6 × 18	16.7	0.22
PL025 × 050	20	18	26	421	33.3	203	101	8	M 6 × 18	16.7	0.22
PL028 × 055	20	18	26	470	33.3	180	92	8	M 6 × 18	16.7	0.25
PL030 × 055	20	18	26	510	33.3	169	92	8	M 6 × 18	16.7	0.24
PL032 × 060	20	18	26	676	42.1	198	106	10	M 6 × 18	16.7	0.27
PL035 × 060	20	18	26	745	42.1	181	106	10	M 6 × 18	16.7	0.27
PL038 × 065	20	18	26	892	47.0	183	107	11	M 6 × 18	16.7	0.30
PL040 × 065	20	18	26	941	47.0	174	107	11	M 6 × 18	16.7	0.30
PL042 × 075	24	21	32	1,490	70.6	214	121	9	M 8 × 22	40.2	0.51
PL045 × 075	24	21	32	1,600	70.6	200	121	9	M 8 × 22	40.2	0.51
PL048 × 080	24	21	32	1,700	70.6	188	113	9	M 8 × 22	40.2	0.55
PL050 × 080	24	21	32	1,770	70.6	180	113	9	M 8 × 22	40.2	0.55
PL055 × 085	24	21	32	2,390	86.2	201	130	11	M 8 × 22	40.2	0.60
PL060 × 090	24	21	32	2,610	86.2	184	123	11	M 8 × 22	40.2	0.64
PL065 × 095	24	21	32	3,090	94.1	184	126	12	M 8 × 22	40.2	0.69
PL070 × 110	28	25	38	4,800	138	210	133	11	M10 × 25	81.3	1.21
PL075 × 115	28	25	38	5,190	138	196	127	11	M10 × 25	81.3	1.27
PL080 × 120	28	25	38	5,490	138	184	123	11	M10 × 25	81.3	1.33
PL085 × 125	28	25	38	6,370	150	189	128	12	M10 × 25	81.3	1.41
PL090 × 130	28	25	38	6,760	150	178	123	12	M10 × 25	81.3	1.47
PL095 × 135	28	25	38	7,740	163	183	129	13	M10 × 25	81.3	1.54
PL100 × 145	33	29	45	10,000	201	184	127	11	M12 × 30	142	2.09
PL110 × 155	33	29	45	11,100	201	168	120	11	M12 × 30	142	2.25
PL120 × 165	33	29	45	13,100	220	168	123	12	M12 × 30	142	2.42
PL130 × 180	38	34	50	17,800	274	166	120	15	M12 × 35	142	3.38
PL140 × 190	38	34	50	20,500	292	164	121	16	M12 × 35	142	3.59
PL150 × 200	38	34	50	24,700	329	172	129	18	M12 × 35	142	3.82
PL160 × 210	38	34	50	27,700	347	170	129	19	M12 × 35	142	4.03
PL170 × 225	44	40	58	34,100	402	157	119	16	M14 × 40	225	5.49
PL180 × 235	44	40	58	38,400	426	158	121	17	M14 × 40	225	5.78
PL190 × 250	52	48	66	47,600	502	147	112	20	M14 × 45	225	7.89
PL200 × 260	52	48	66	52,700	527	146	113	21	M14 × 45	225	8.26
PL220 × 285	56	51	72	69,100	628	149	115	18	M16 × 50	348	10.6
PL240 × 305	56	51	72	83,800	698	152	120	20	M16 × 50	348	11.5
PL260 × 325	56	51	72	104,000	803	161	129	23	M16 × 50	348	12.4
PL280 × 355	66	61	84	129,000	923	144	114	22	M18 × 60	475	18.7
PL300 × 375	66	61	84	151,000	1,000	147	118	24	M18 × 60	475	19.9