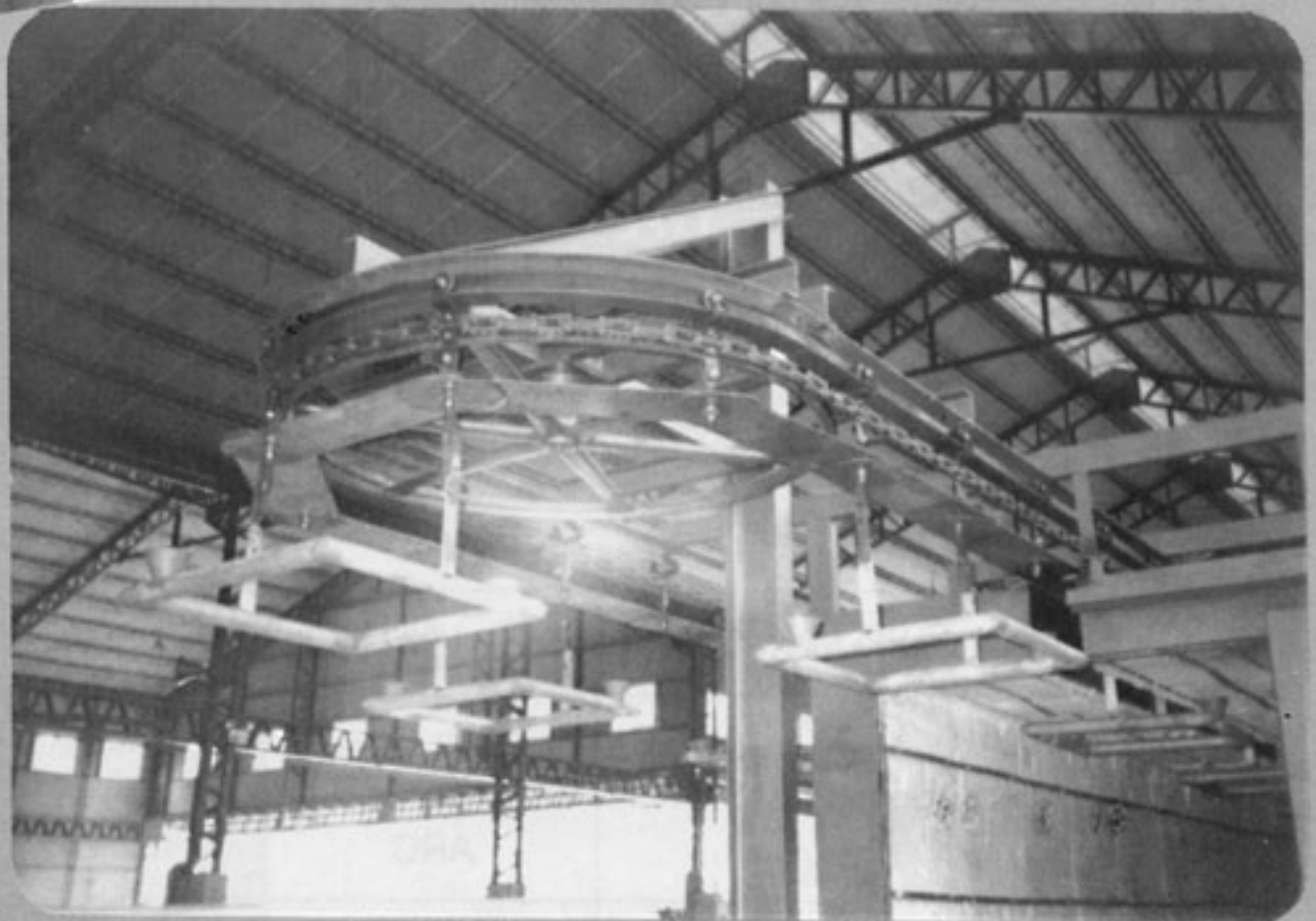
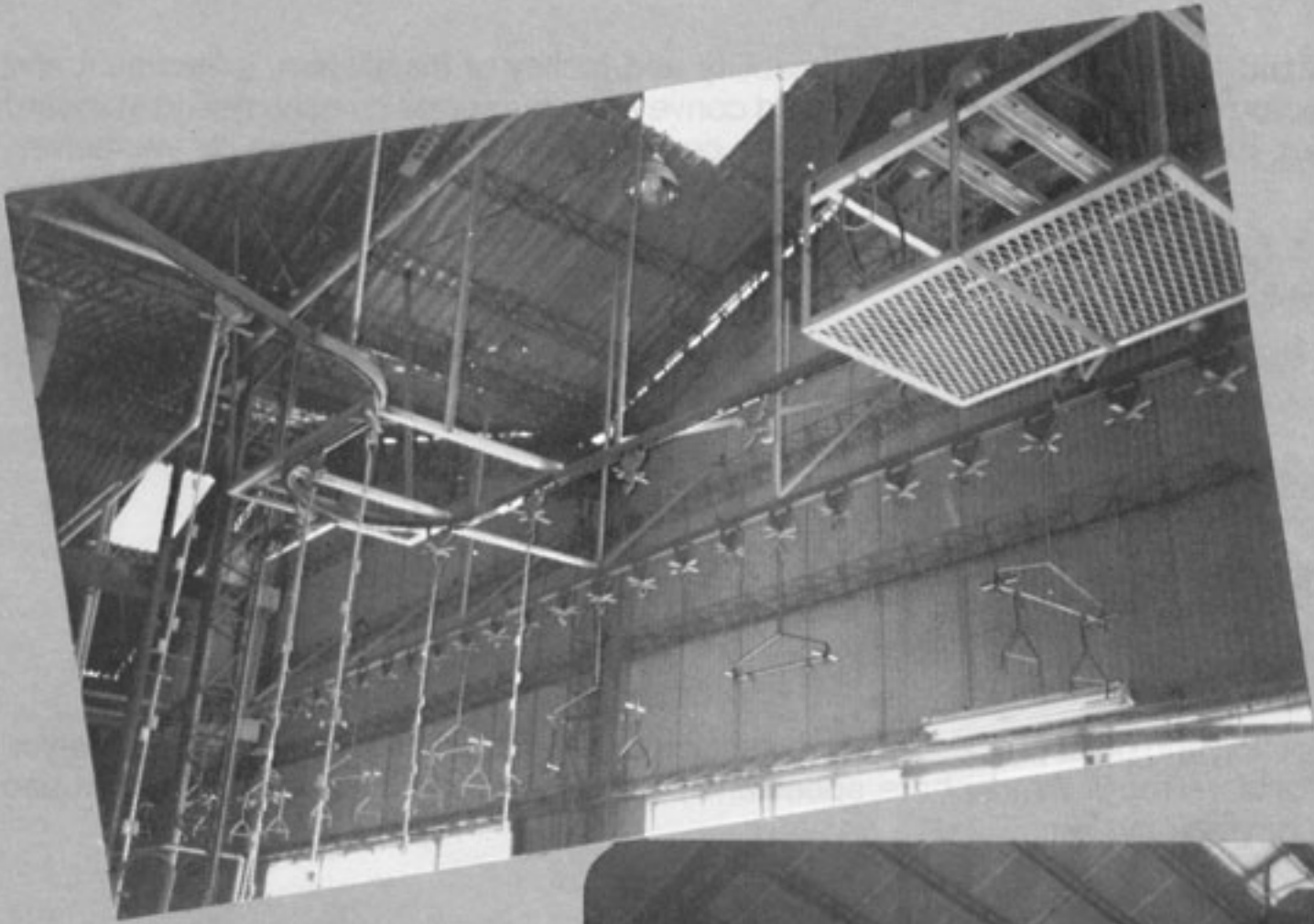


# OVERHEAD TROLLEY CONVEYOR



## SPECIFICATIONS

AZ-Series Overhead Conveyor are manufacture to contribute to the efficient mechanization of many industrial operations, thereby reducing manufacturing and handling cost of parts, components and assemblies.

## APPLICATIONS

For conveying, transfer, parting, metal plating and assembly lines in factories manufacturing light and heavy duty electric appliances, automobiles, computers, television tube, pottery and stone, agricultural machines and equipment, furniture, and textile.

## FEATURES

### Do it yourself

All components are standardized for uniformity, interchangeability and facility of installation, adjustment and maintenance. With a few tools, you can easily erect the overhead conveyors yourselves by assembling standard components. Change of layout, extension or replacement of the conveyor can be easily done by yourselves, too.

### Reliable and economical

All standard components are mass produced under strict control and we can assure you of their stable quality, low cost and economical maintenance.

### Quick delivery

Standard components are available from stock at any time.

### Versatile application

Assembling, drying, baking, cooling and other processes can be performed on material in transit on the conveyor. It can answer versatile needs for travel route, atmosphere, speed and so on. Complicated storage line can be also laid out with power and free conveyor system.

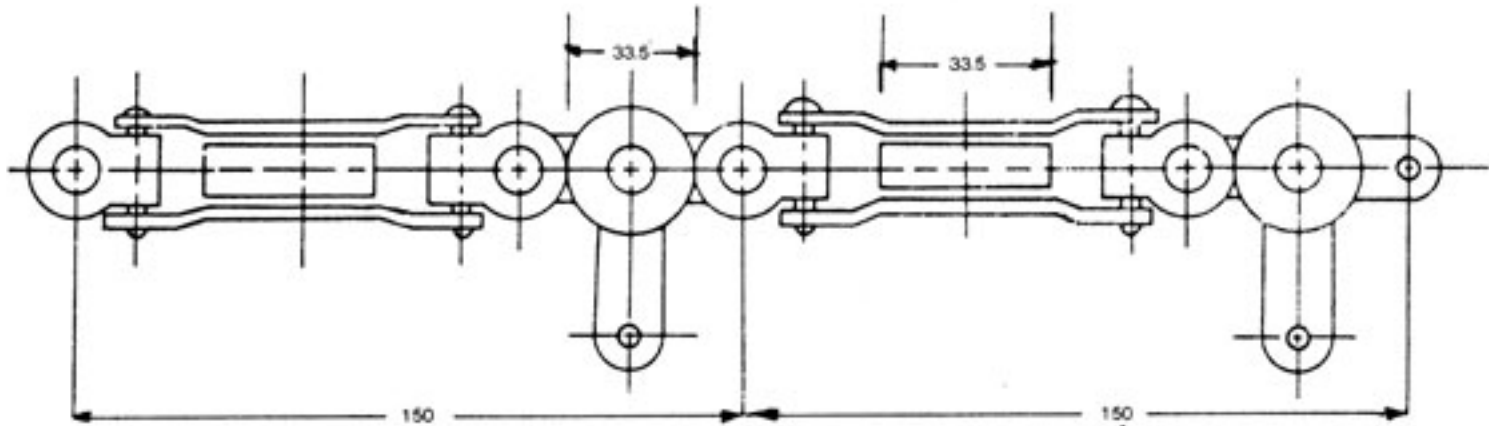
## SPECIFICATION

TYPE		A-200	A-500
Chain tensile strength (kg)		2,000	5,000
Allowable Pitch Load Per Hanger (kg)		20	50
Load Pitch (mm)		150	150
Allowable Max. Conveyor Speed (m/min)		15	15
Horizontal turns	Radii (mm)	400	600
	ARC	45°, 90°	45°, 90°
Vertical curves	Radii (mm)	400	600
	ARC	30°, 45°	30°, 45°

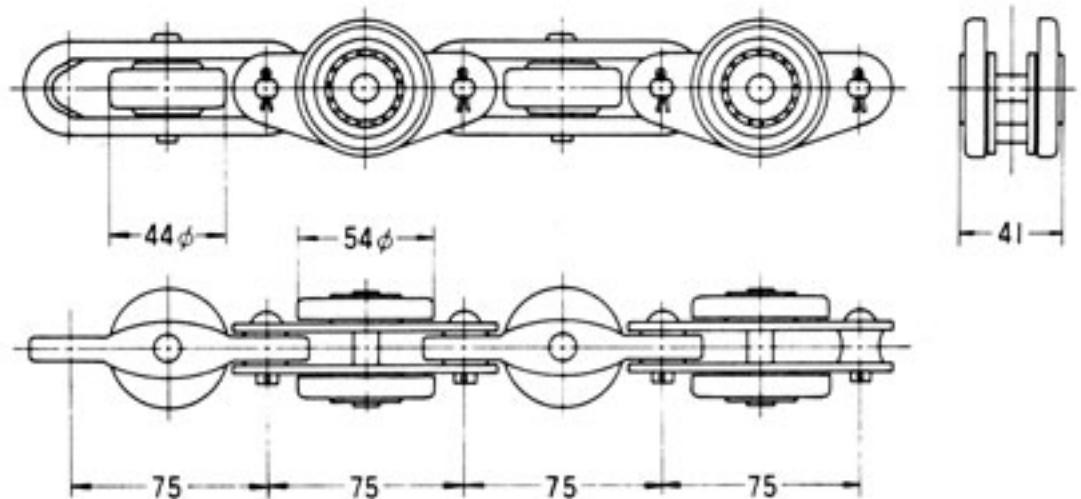
# Standard Components

## UNIVERSAL CHAIN

The construction of this chain makes it possible to run in any direction, even 90 degree vertical, thus giving owner a flexible layout saving valuable space. Ball bearing rollers of this universal chain do not require trolleys, corner wheels or roller sets.



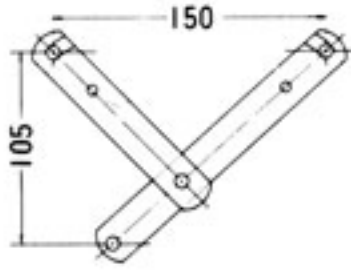
**A-200**



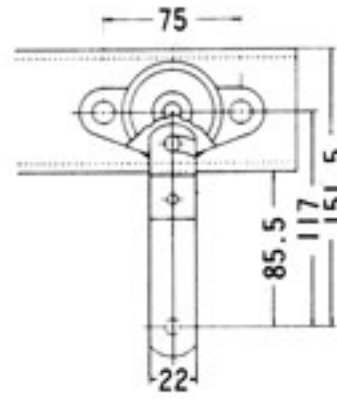
**A-500**

# CHAIN HANGER (FOR A-500)

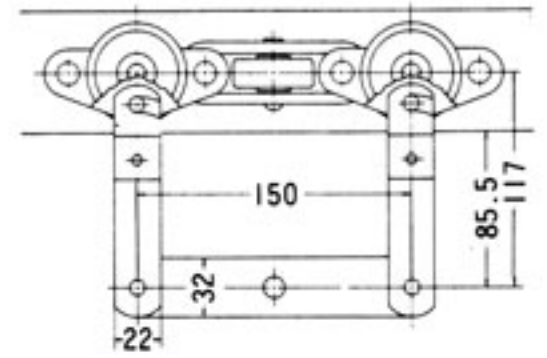
**Y HANGER**



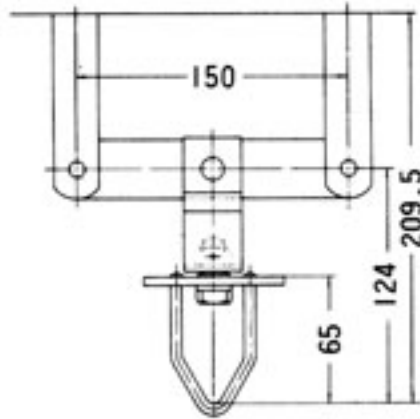
**A HANGER**



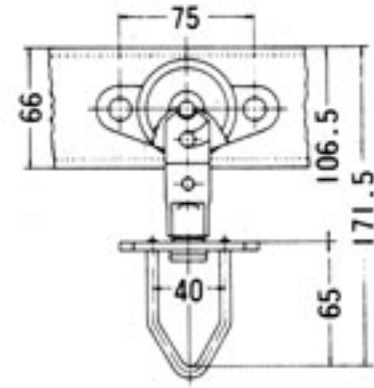
**C HANGER**



**C + D HANGER**

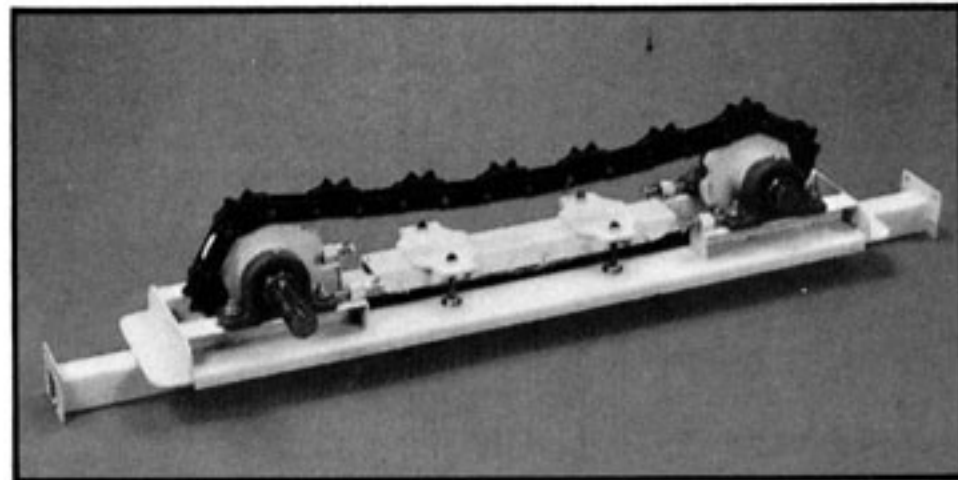


**D HANGER**

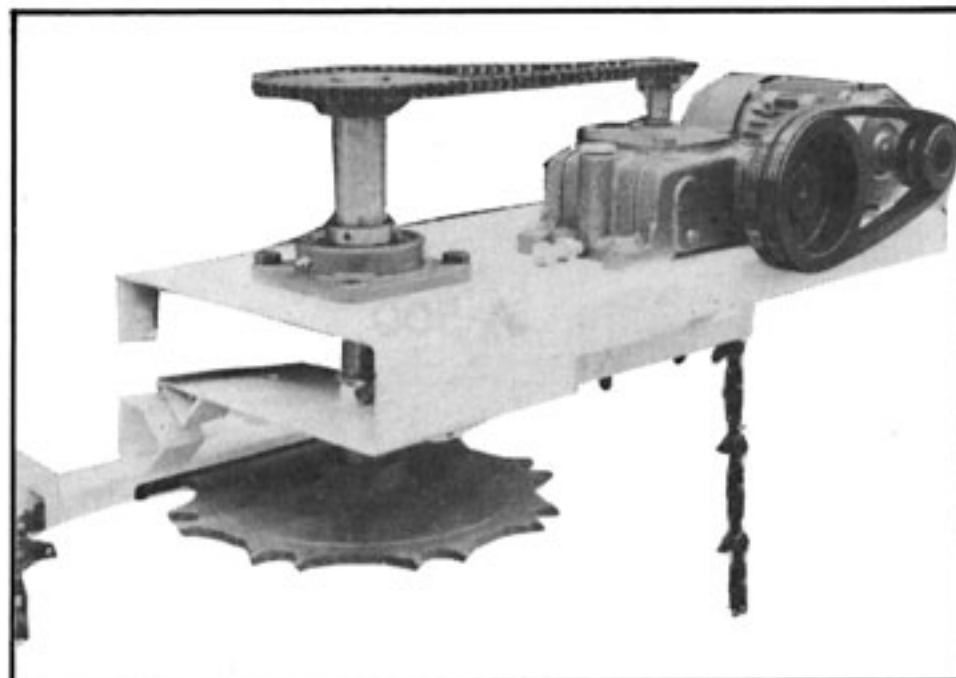


## DRIVE UNIT FOR A-500

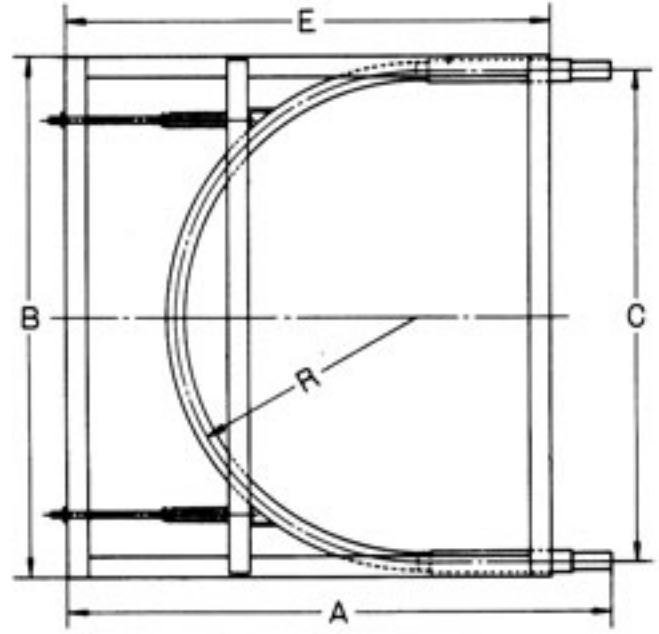
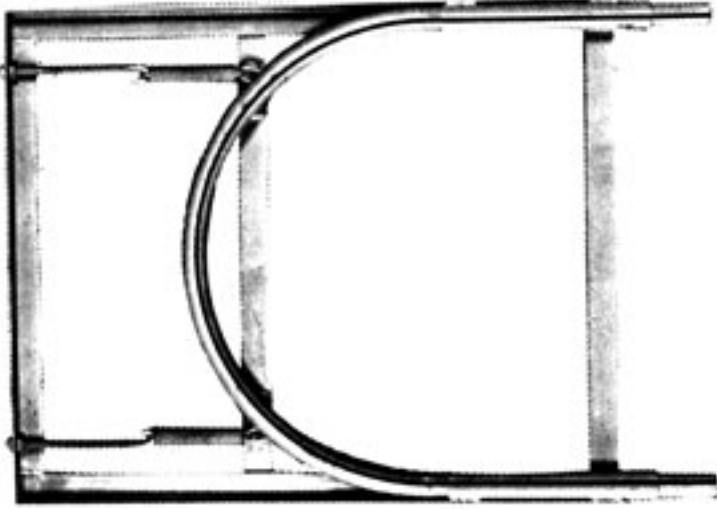
Caterpillar chain drive make full contacts with universal chain to give smoother movement.



## SPROCKET DRIVE FOR A-200



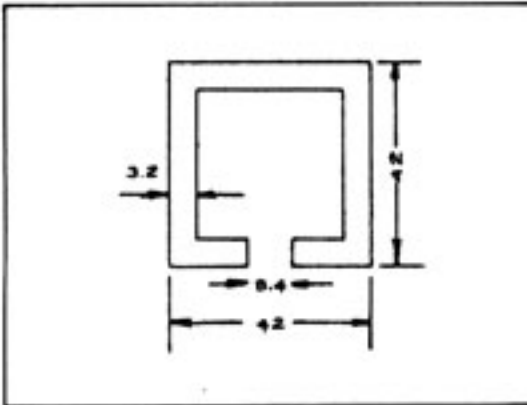
## TAKE UP UNIT



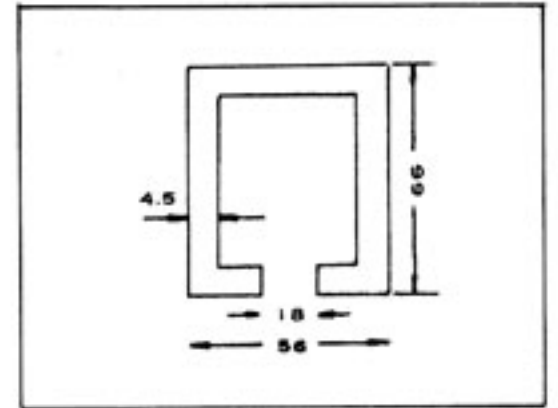
R	A	B	C	E
400	1200	870	800	1050
600	1350	1270	1200	1200

## TRACK

**A-200**



**A-500**



- Straight track (standard length)

A-200 — 2450 mm

A-500 — 3000 mm

- Horizontal turns

400 R — 45°, 90°

600 R — 45°, 90°

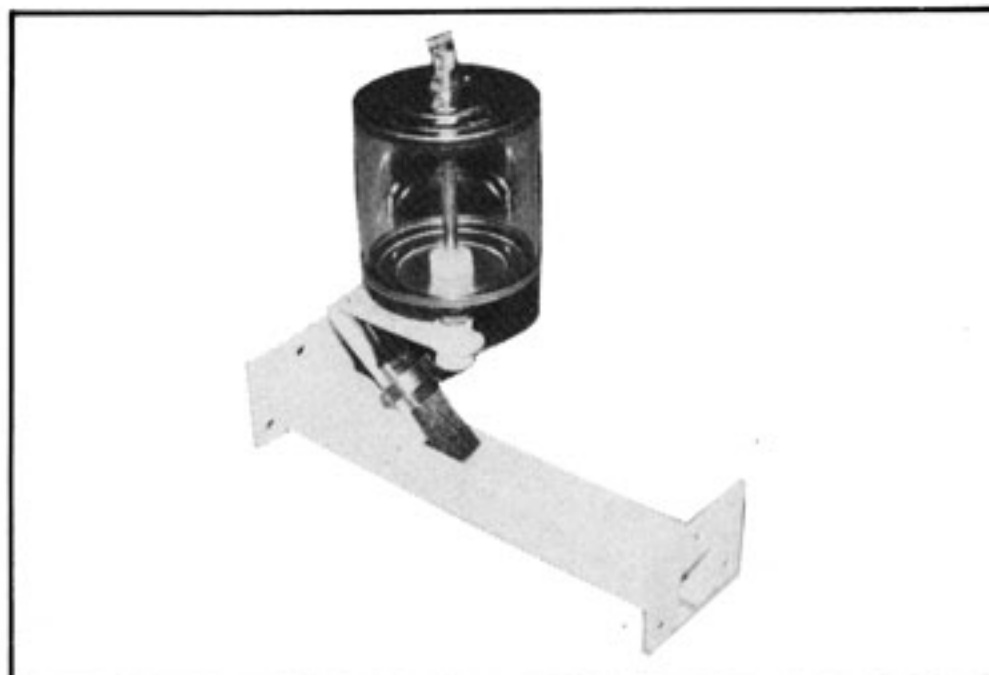
- Vertical turns

400 R — 30°, 45°

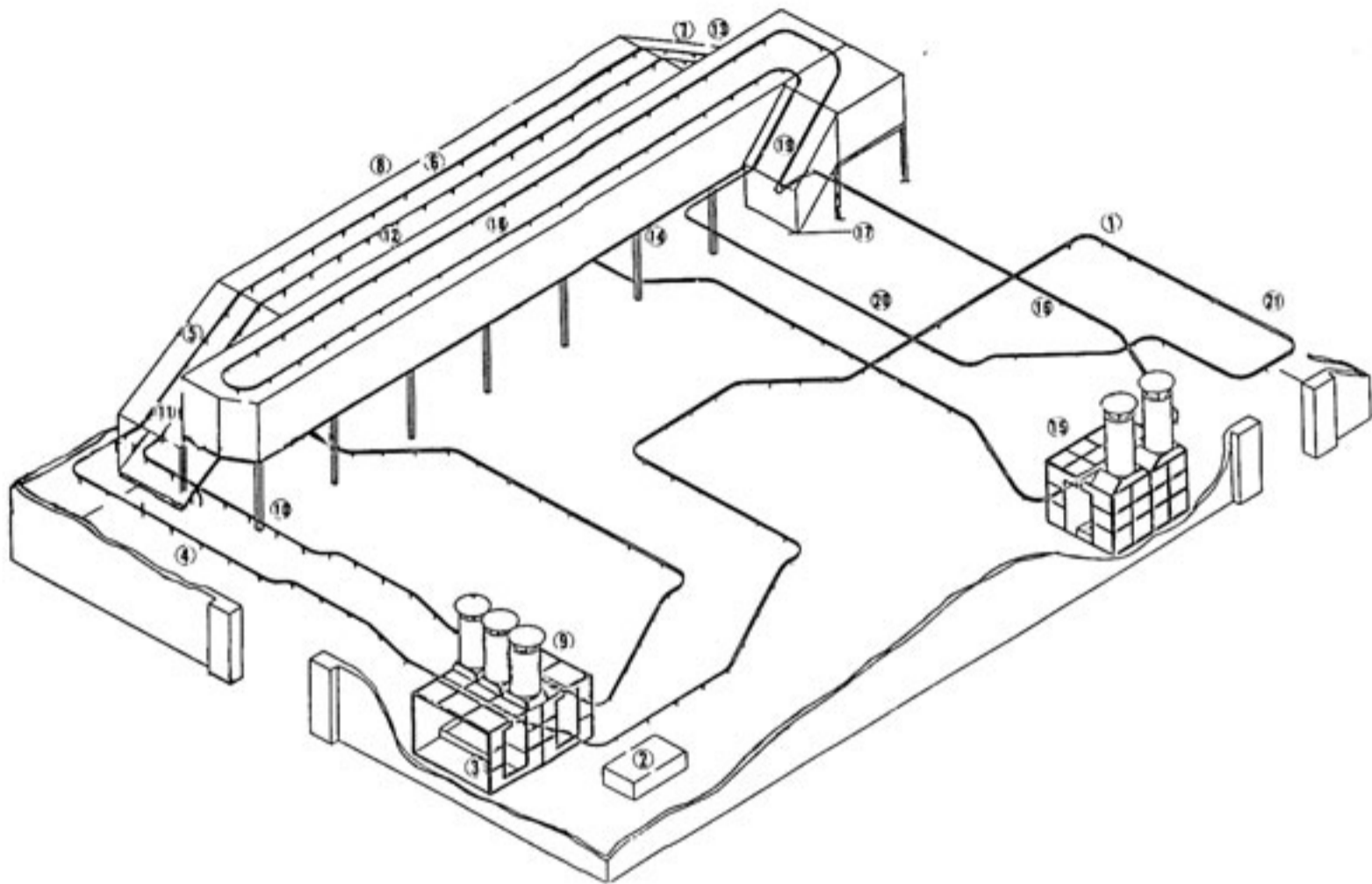
600 R — 30°, 45°

Remarks: Track do not come with track flange.  
Flange order separately.

## BRUSH LUBRICATOR



# LAYOUT PLAN OF A FURNITURE FACTORY



## Explanation

- 1) Load- #180 Sand Paper
- 2) Stain (Colour Dipping on The Thinner Solution)
- 3) Base Paint Spray Booth (Hand Gun-For Electrical Static Typed)
- 4) Setting Zone.
- 5) Air Cutter.
- 6) Base Paint Dry Oven (Temp 50°C)
- 7) Air Cutter.
- 8) Sander Room #240 — #280 Sand Paper.
- 9) Glaze Paint Spray Booth (Ditto As No. 3)
- 10) Setting Zone.
- 11) Air Cutter.
- 12) Glaze Paint Curing Oven.
- 13) Air Cutter.
- 14) Smooth Sanding Area #240 — #280 Sand Paper.
- 15) Topcoat Paint Spray Booth (Ditto As No. 3)
- 16) Setting Zone.
- 17) Air Cutter.
- 18) Baking Oven (Temp 60°C).
- 19) Air Cutter.
- 20) Cooling Zone (Far or Blower).
- 21) Unload.

\*Heating Energy , Can Used To Vapour or F.I.R.